



PARC THOMPSON



120 Beautifully-Crafted Townhome Residences

Bringing value, style and convenience together under one roof, Parc Thompson provides the perfect setting for you and your family to grow. Each home features a spacious 3-bedroom floorplan with accents of intuitive, family-forward design and quality finishes throughout.





Each of the homes at Parc Thompson offers lots of functional living space, complete with thoughtfully-designed three bedroom layouts and an attached two-car garage. All this space without sacrificing on style or comfort, these homes embody the true meaning of value for your family.

**Value, Style &
Convenience
All Under One Roof**

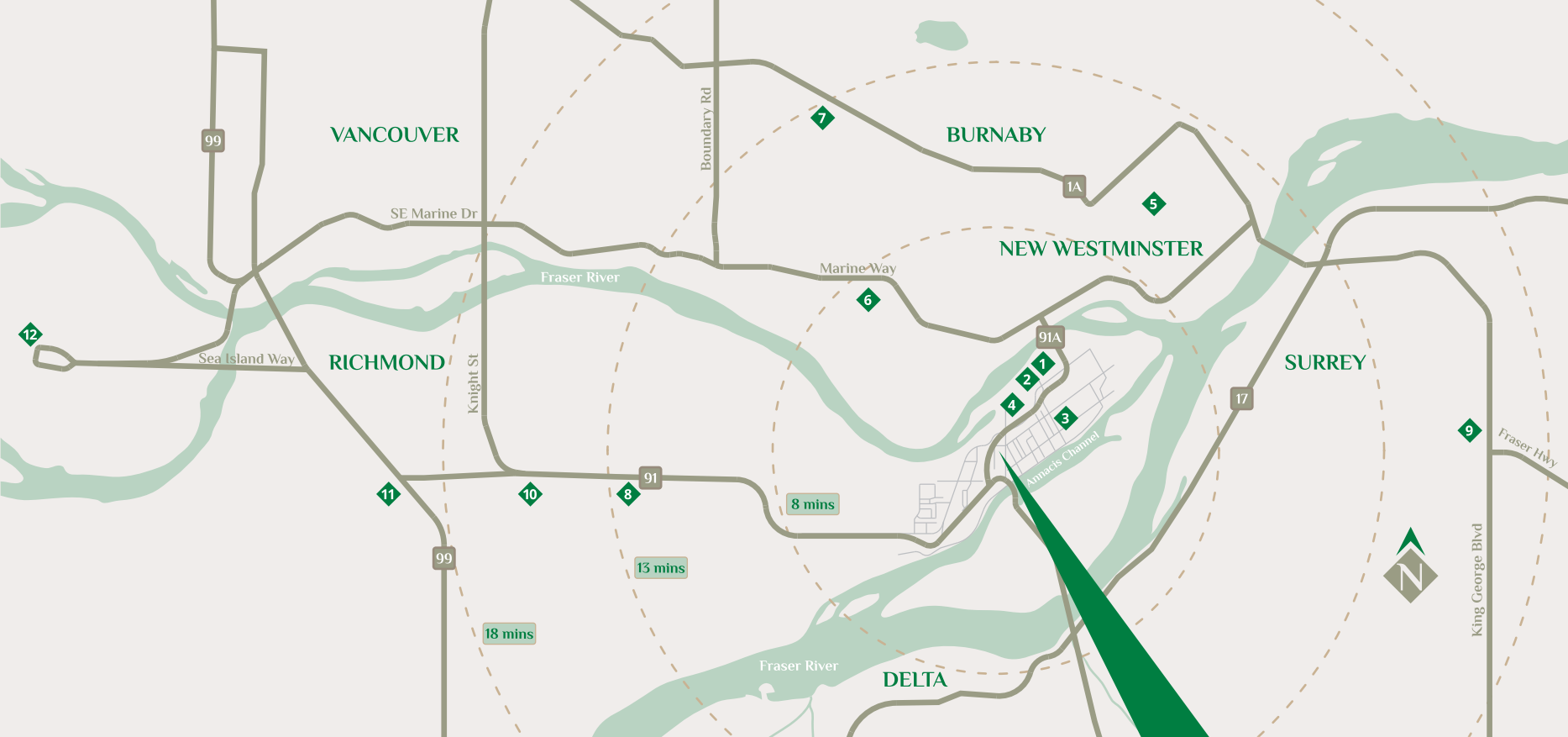


Connected In All Directions

Parc Thompson is situated in a unique neighbourhood just steps away from the shopping and entertainment hub, Queensborough Landing. This central location offers quick connections to a different destination in every direction including Richmond city centre, Surrey, New Westminster and Burnaby.

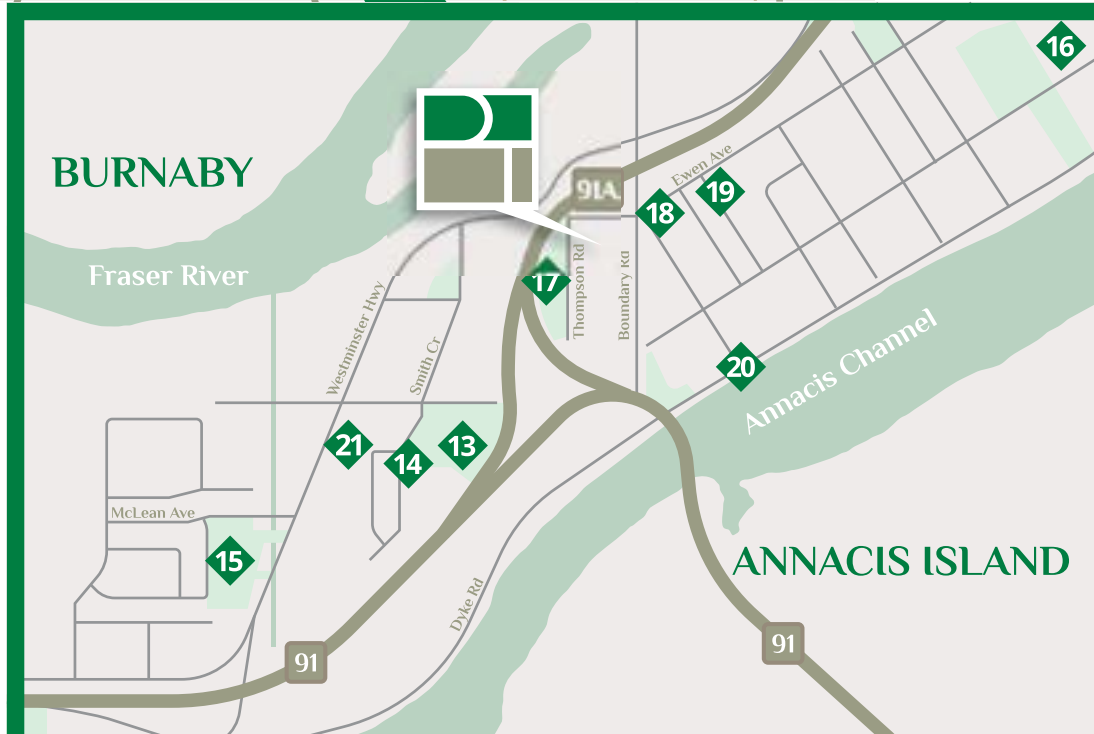
Beautifully-crafted townhomes surrounded by parks, green spaces, and walking trails, Parc Thompson is a complete community that residents will feel proud to call home.





- | | |
|--|---|
| 1 Queensborough Landing | 13 Hamilton Community Park |
| 2 Walmart Supercentre | 14 Hamilton Elementary |
| 3 Queensborough Community Centre | 15 McLean Park |
| 4 Starlight Casino | 16 Queensborough Middle School |
| 5 Royal City Centre | 17 Hamilton Hwy/Off-Leash Dog Park |
| 6 Riverway Golf Course & Driving Range | 18 410 bus service to 22nd Street Station (Expo Line) |
| 7 Metropolis at Metrotown | 19 Queens Plaza |
| 8 Mayfair Lakes Golf & Country Club | 20 Dyke trail |
| 9 Central City Shopping Centre | 21 Future retail stores |
| 10 Greenacres Golf Course | |
| 11 Richmond Nature Park | |
| 12 YVR International Airport | |

 **PROJECT LOCATION**
4300 Thompson Rd.,
Richmond



Features



PARC THOMPSON

THOUGHTFULLY-DESIGNED HOMES

- Timeless 3 bedroom townhomes
- Spacious and airy 9' ceilings in main living area
- Attached garage with parking for two full-size vehicles
- Electric vehicle charging available in all garages
- Solar panel-ready roofing system
- Efficient heat recovery ventilation system to ensure fresh air throughout the home
- Amenity room with kitchen for group functions
- Peace of mind with 2-5-10 new home warranty

IMPRESSIVE INTERIORS

- Choice of two designer-selected interior colour schemes: Flint & Lotus
- Resilient vinyl plank flooring with a wood-like finish throughout living, kitchen and dining areas
- Cozy carpets in bedrooms and stairs
- Modern privacy roller shades
- Energy-efficient front-load washer and dryer

BLISSFUL BATHROOMS

- Luxurious quartz countertop with undermount sink(s)
- Custom flat-panel, soft-close cabinetry with chrome pulls
- Imported porcelain tiles for bathroom floors and walls
- Sleek Grohe faucets, shower and tub fixtures

GOURMET KITCHENS

- Luxurious quartz countertop with large stainless-steel undermount kitchen sink
- Custom flat-panel, soft-close cabinetry with sleek polished chrome pulls and under-cabinet task lighting
- Stainless-steel appliance package, including:
 - 36" LG french door fridge with icemaker
 - 30" GE electric range with self-cleaning oven and electronic touch controls
 - GE over-the-range microwave oven
 - 24" GE dishwasher with hidden controls and Five-Level Wash System
- Chrome kitchen faucet with pull-out spray by Grohe
- Modern porcelain backsplash tiles with a smooth, silky, satin finish
- Installation-ready central vacuum with kitchen kick-pan

CONVENIENT LOCATION

- Steps away from Hamilton Community Center and several public parks (*Hamilton VLA Park, Hamilton Community Park, Thompson's Landing Park, & Hamilton HWY Off-Leash Dog Park*)
- 5 minutes from Queensborough Landing, Starlight Casino, Anytime Fitness, Queens Plaza, and major retailers such as, Walmart, Lowe's, and more
- 10 minutes to 22nd St. Station (connecting to Skytrain's Expo line) via 410 bus route
- 18 minutes to Richmond city centre

Site Plan

PHASE 2



PARC THOMPSON



Sizes, specifications and materials are approximate only and are subject to change without notice. E.&O.E.

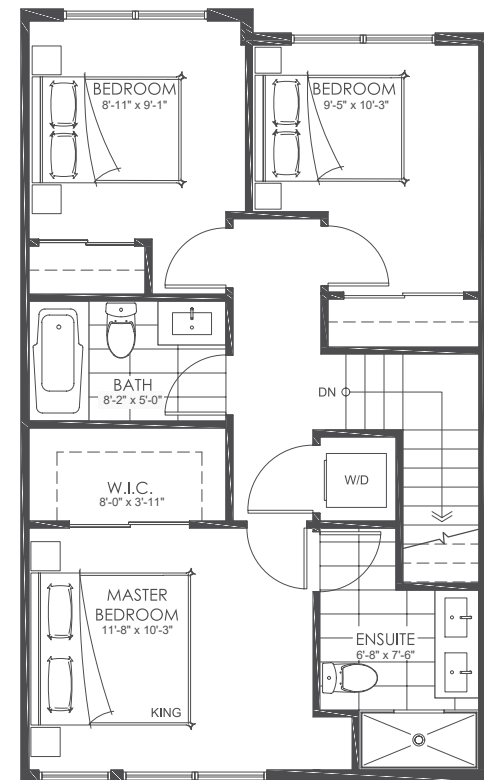
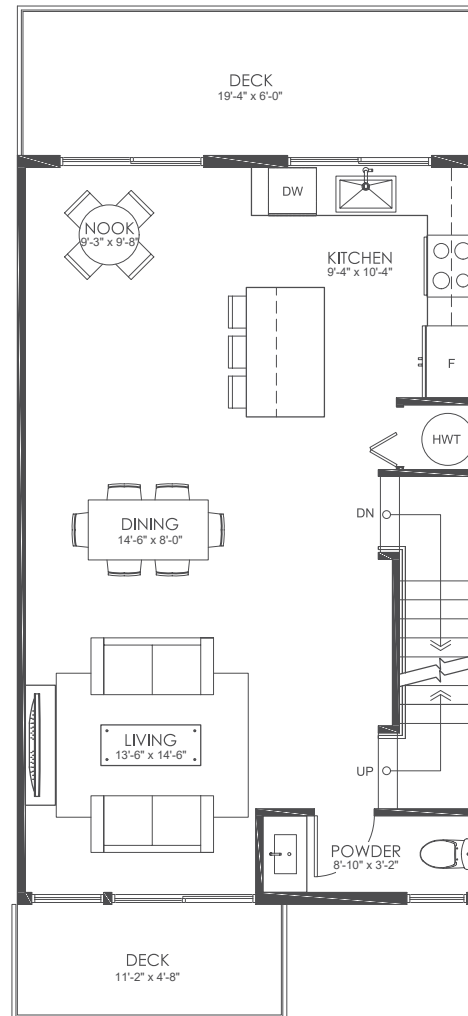
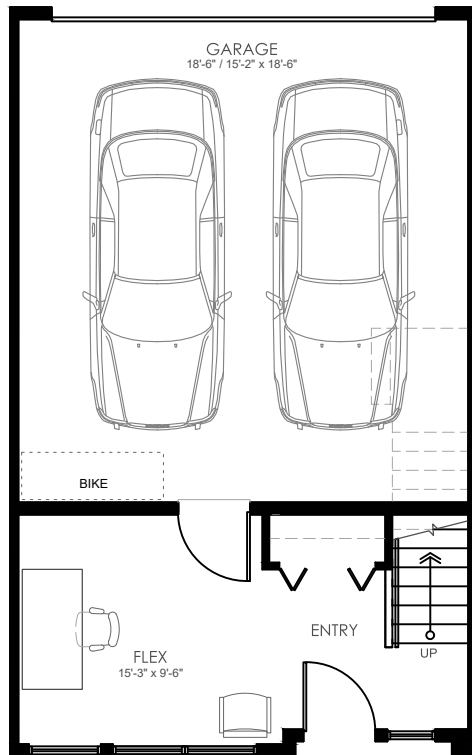
Plan A1

3 Bedroom + Nook + 2.5 Bath

Living:	1,421 sf	Decks:	168 sf
Garage:	406 sf	Yard:	266-291 sf
Total Area:		2261-2286 sf (approx.)	



PARC THOMPSON



Plan A2

3 Bedroom + Nook + 2.5 Bath

Living:	1,475 sf	Decks:	168 sf
Garage:	410 sf	Yard:	210 - 313 sf
Total Area:		2,263 - 2,366 sf (approx.)	



PARC THOMPSON



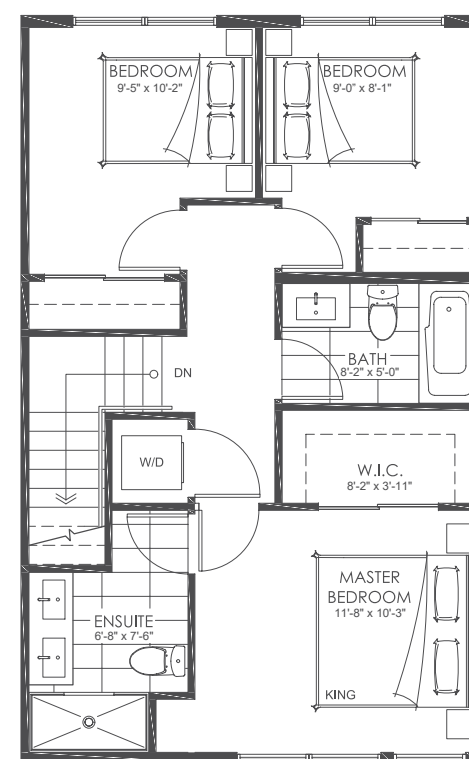
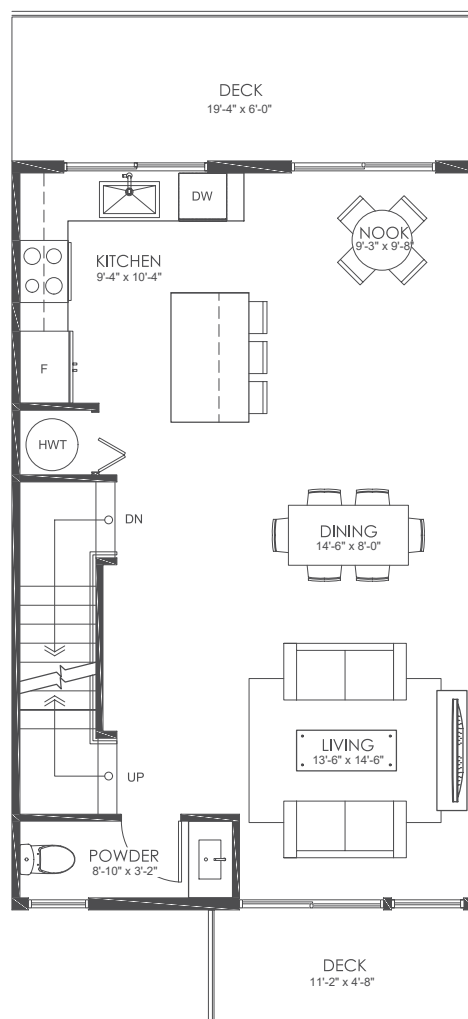
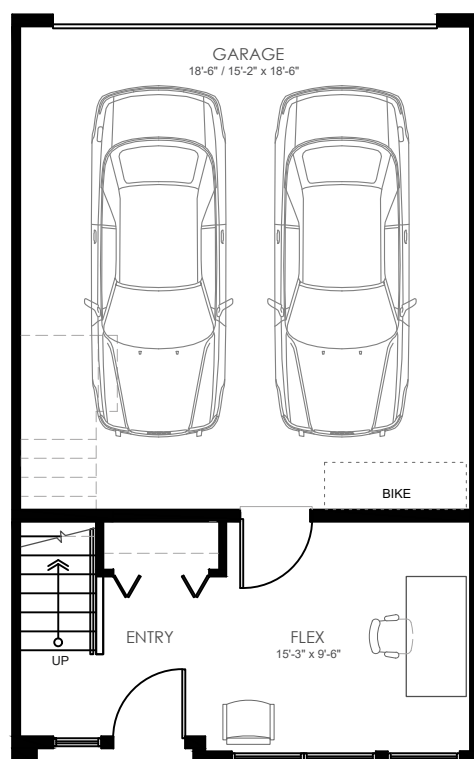
Plan A3

3 Bedroom + Nook + 2.5 Bath

Living:	1,410 sf	Decks:	168 sf
Garage:	406 sf	Yard:	206 - 286 sf
Total Area:		2,190 - 2,270 sf (approx.)	



PARC THOMPSON



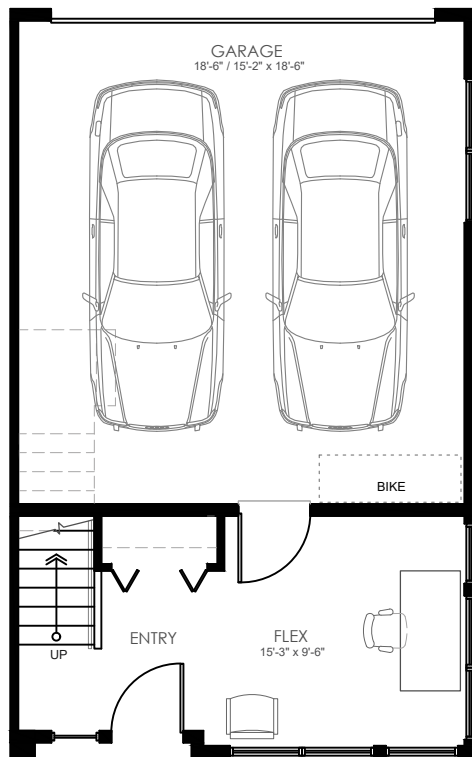
Plan A4

3 Bedroom + Nook + 2.5 Bath

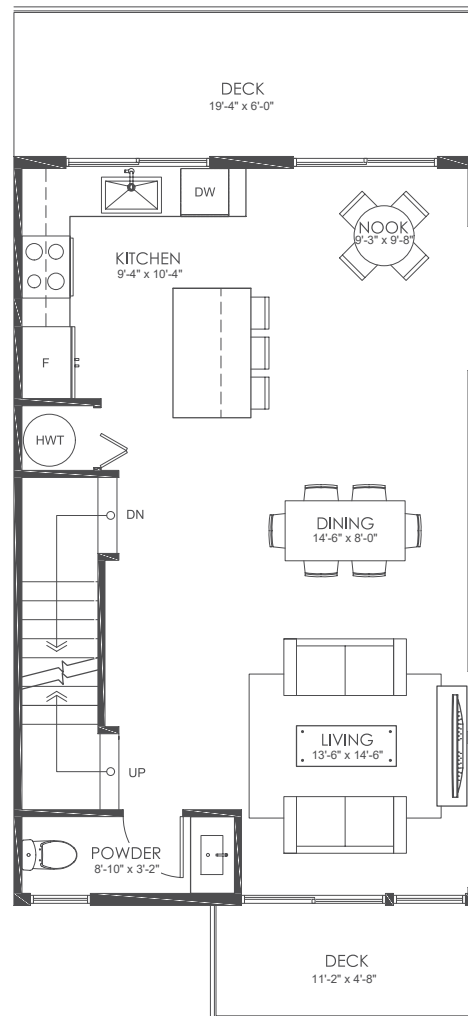
Living:	1,421 sf	Decks:	168 sf
Garage:	406 sf	Yard:	267 - 344 sf
Total Area:		2,262 - 2,340 sf (approx.)	



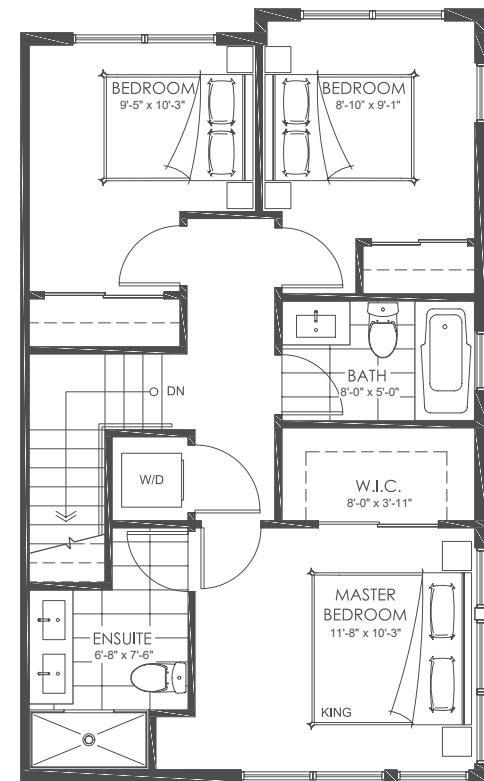
PARC THOMPSON



LOWER



MAIN



UPPER

Plan B1

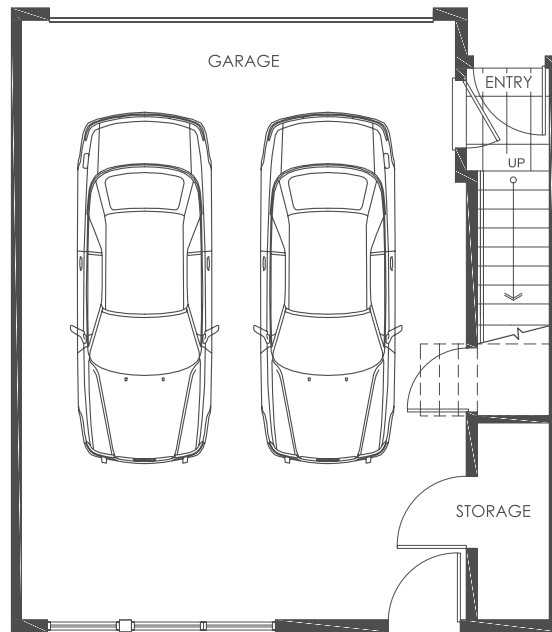
3 Bedroom + 2.5 Bath

Living 1,302 sf
Garage 496 sf

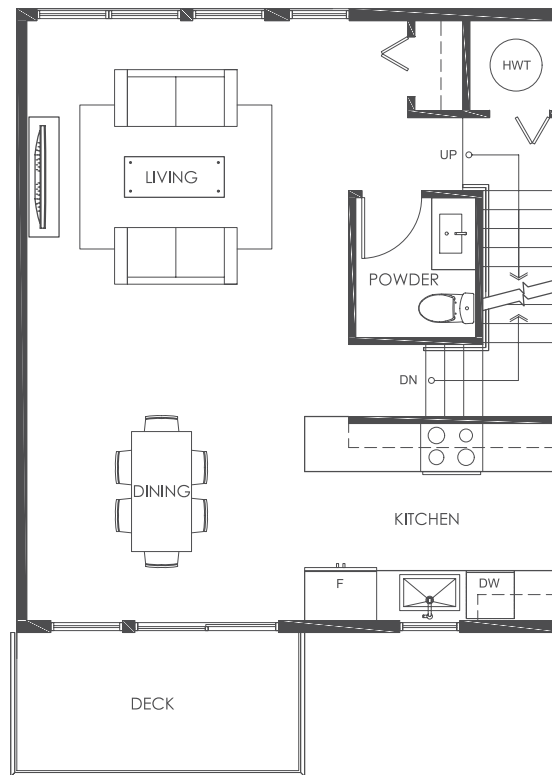
Total (approx.) 1,798 sf



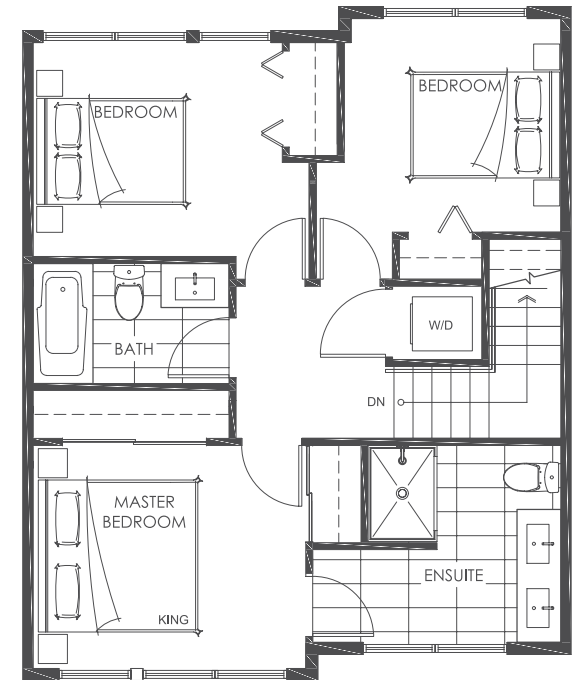
PARC THOMPSON



LOWER



MAIN



UPPER

Plan B3

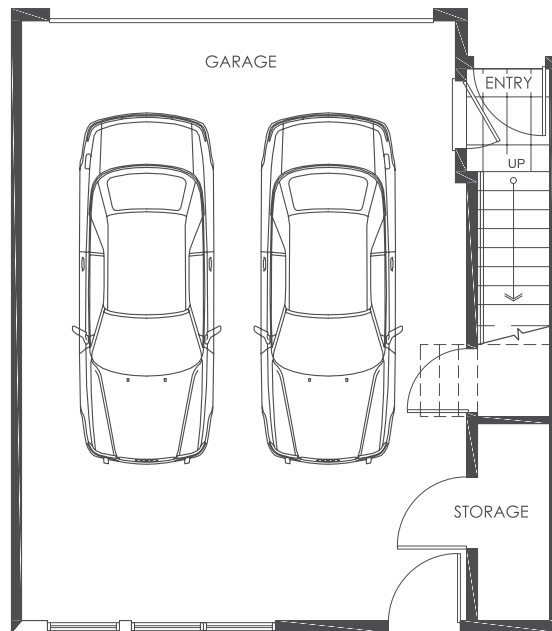
3 Bedroom + 2.5 Bath

Living 1,292 sf
Garage 496 sf

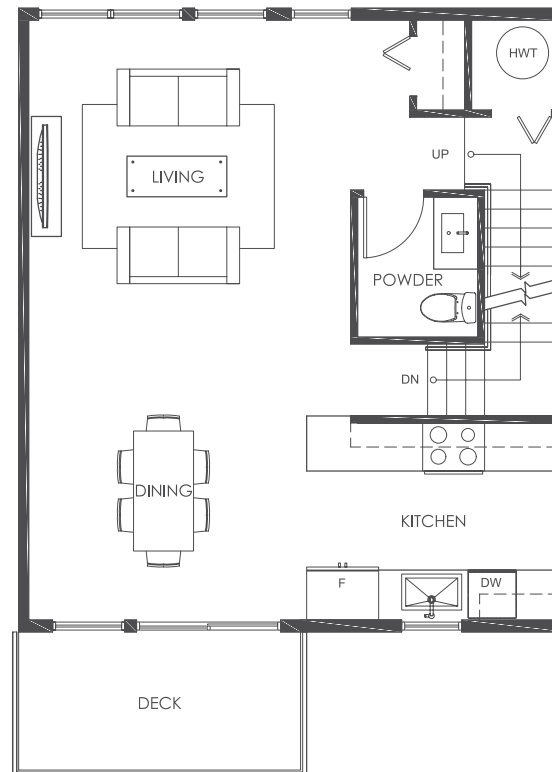
Total (approx.) 1,788 sf



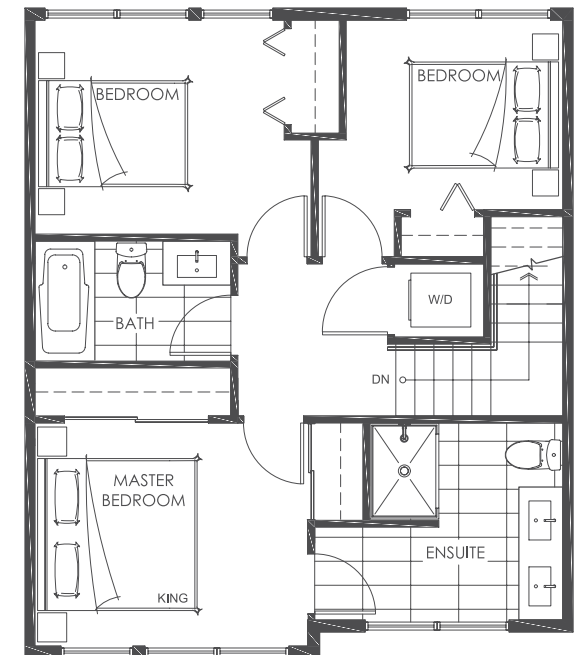
PARC THOMPSON



LOWER



MAIN



UPPER

Plan B4

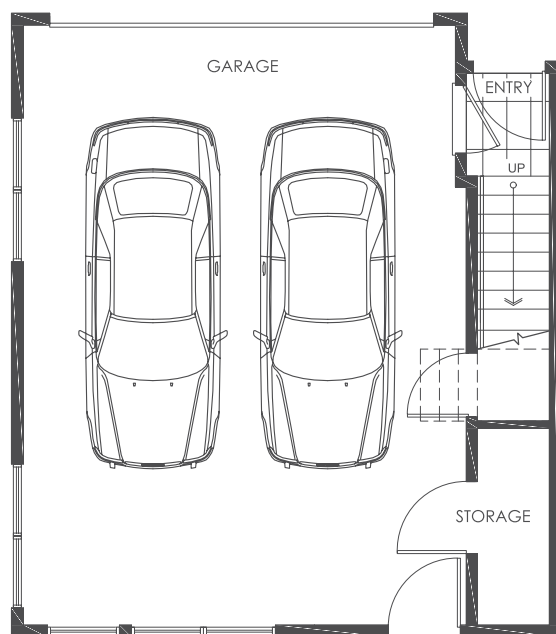
3 Bedroom + 2.5 Bath

Living 1,292 sf
Garage 496 sf

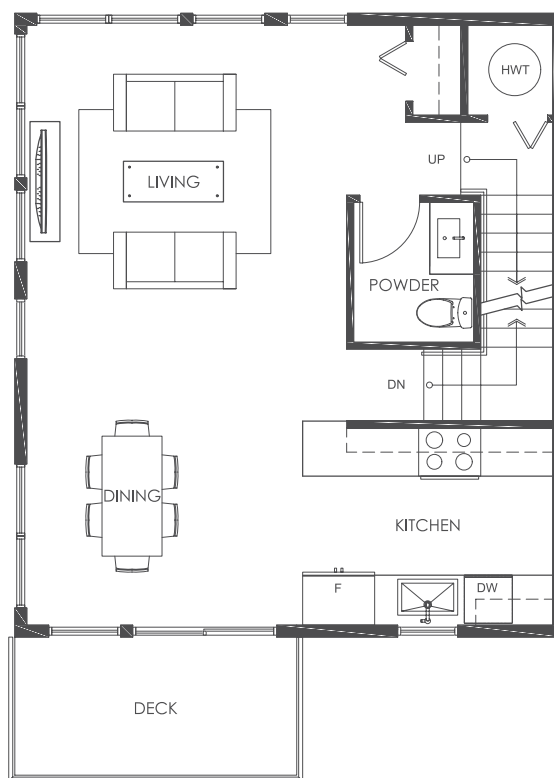
Total (approx.) 1,788 sf



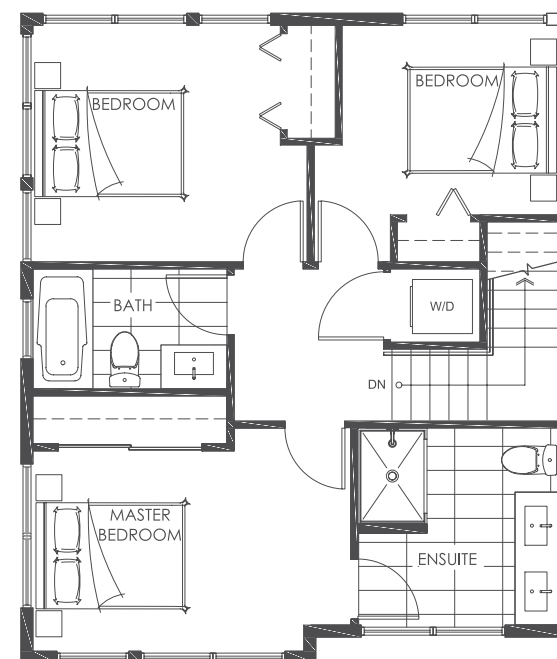
PARC THOMPSON



LOWER



MAIN



UPPER

Plan C3

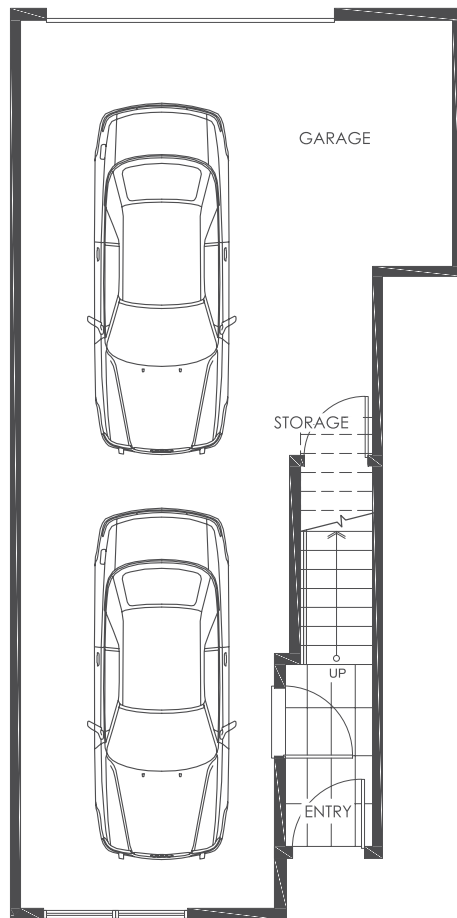
3 Bedroom + 2.5 Bath

Living 1,292 sf
Garage 550 - 551 sf

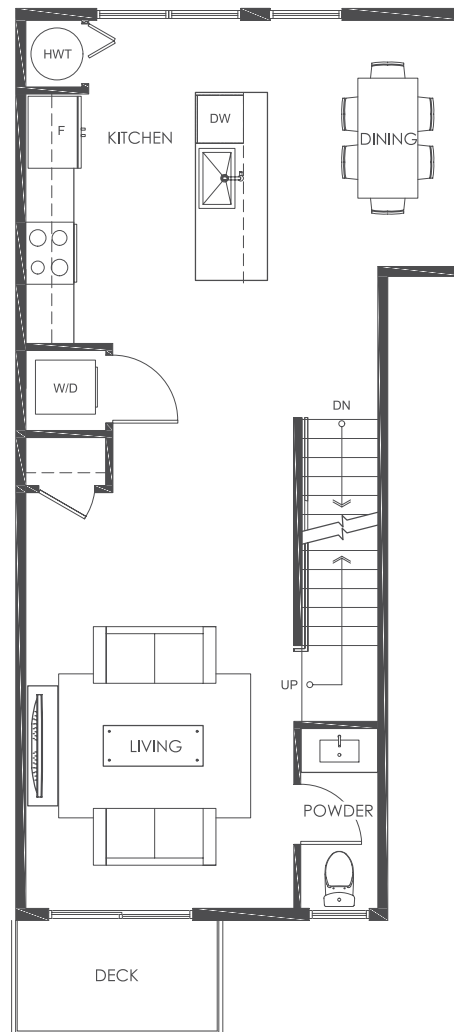
Total (approx.) 1,842 - 1,843 sf



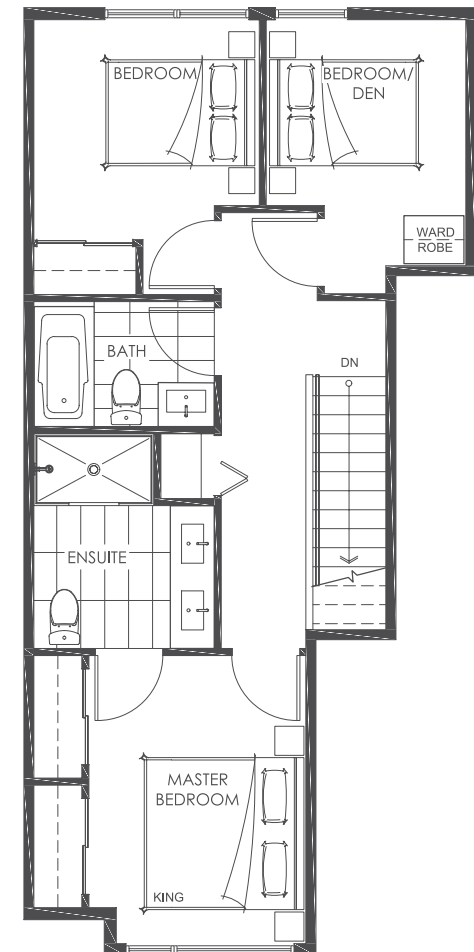
PARC THOMPSON



LOWER



MAIN



UPPER

Plan C3a

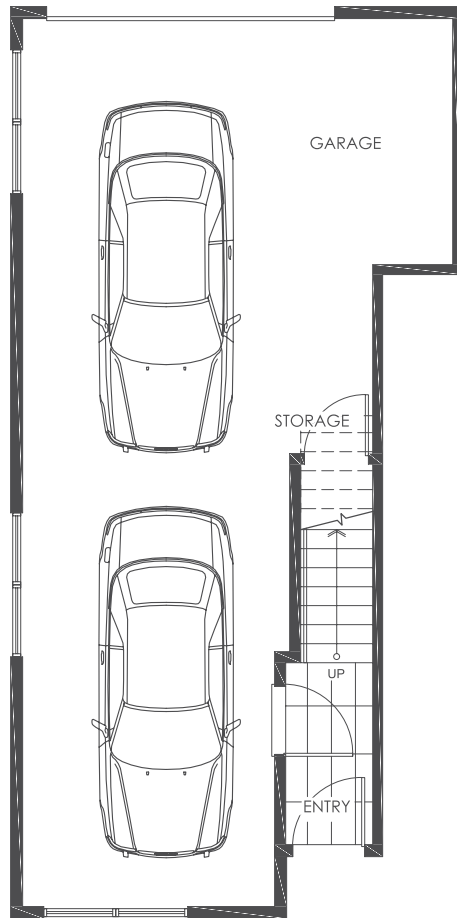
3 Bedroom + 2.5 Bath

Living 1,292 sf
Garage 550 sf

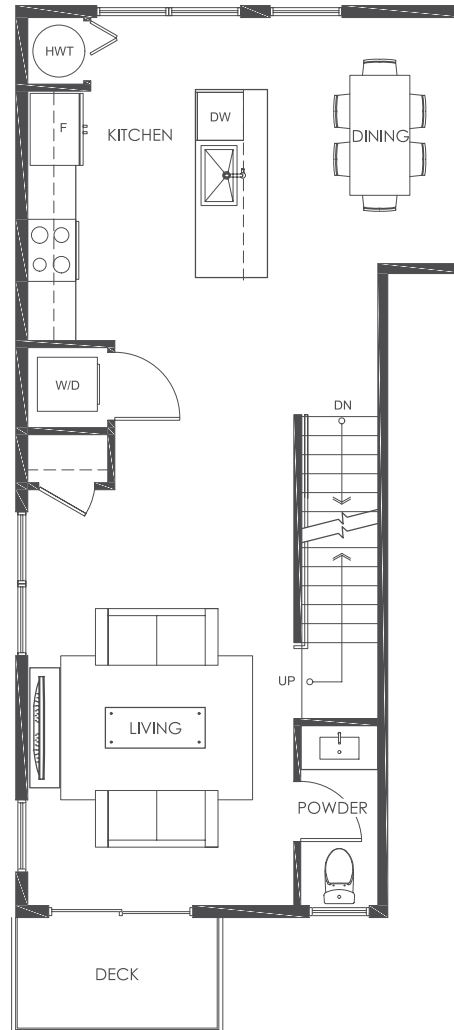
Total (approx.) 1,842 sf



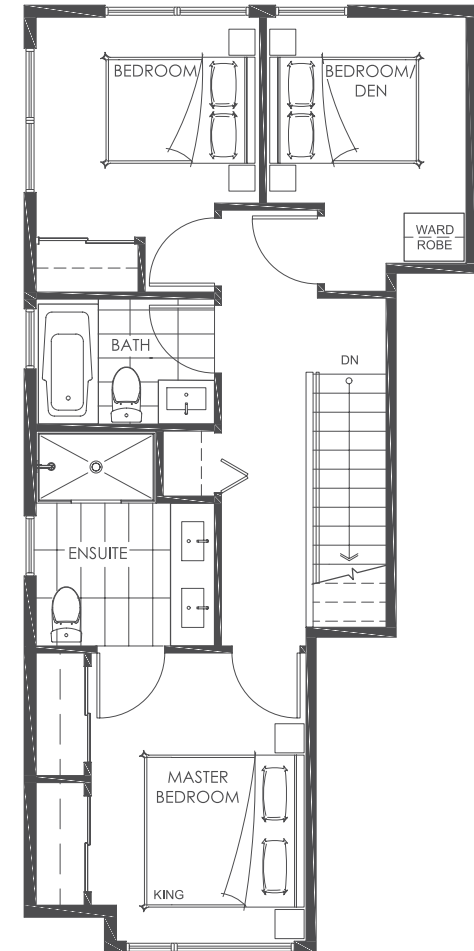
PARC THOMPSON



LOWER



MAIN



UPPER

Plan C4

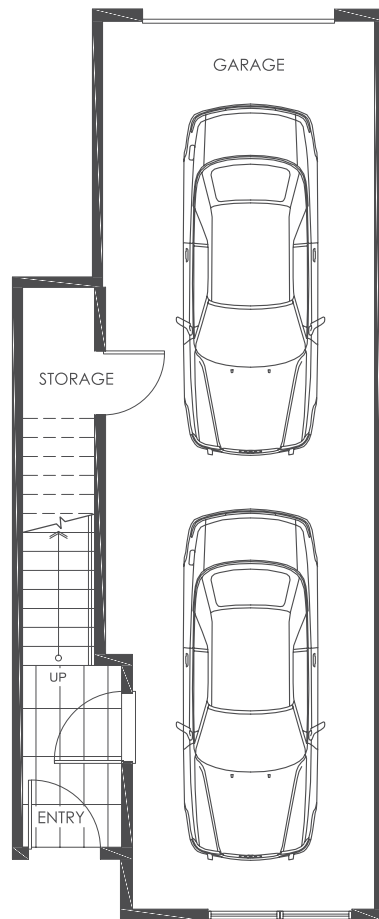
3 Bedroom + Nook + 2.5 Bath

Living 1,249 - 1,259 sf
Garage 441 - 443 sf

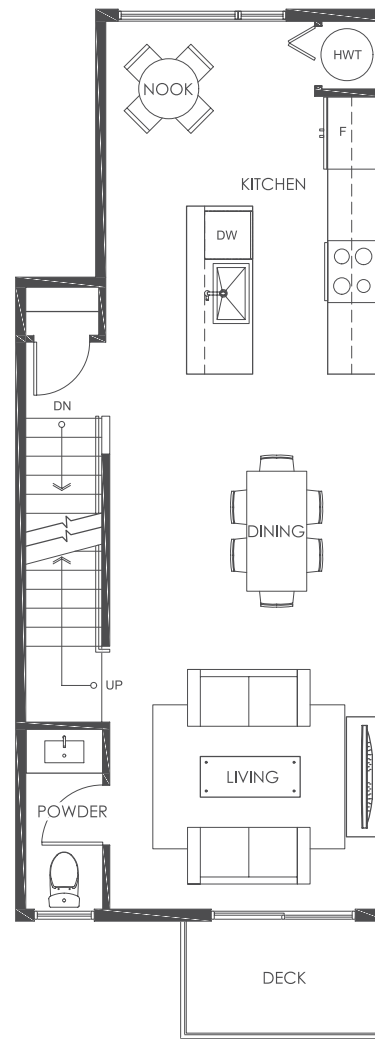
Total (approx.) 1,690 - 1,702 sf



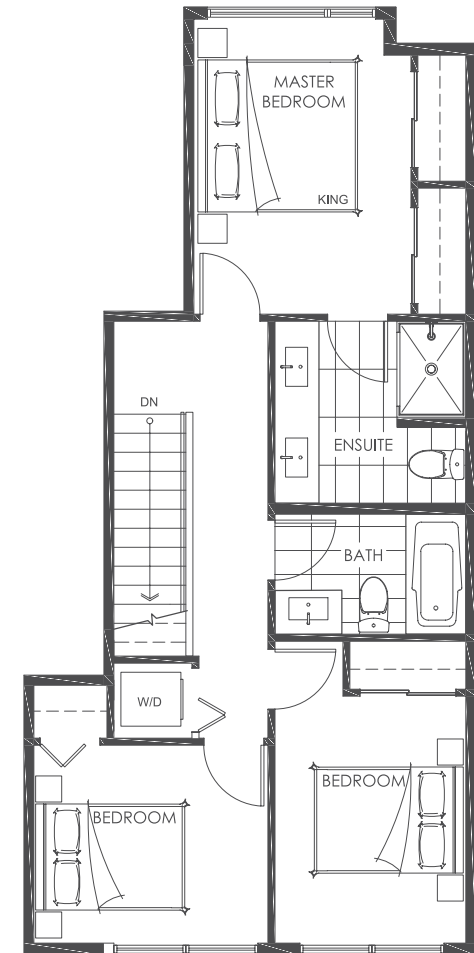
PARC THOMPSON



LOWER



MAIN



UPPER

Plan C4a

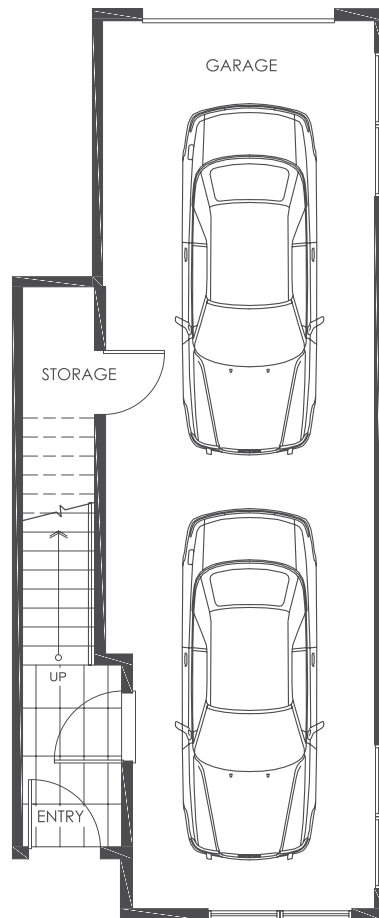
3 Bedroom + Nook + 2.5 Bath

Living 1,259 sf
Garage 442 sf

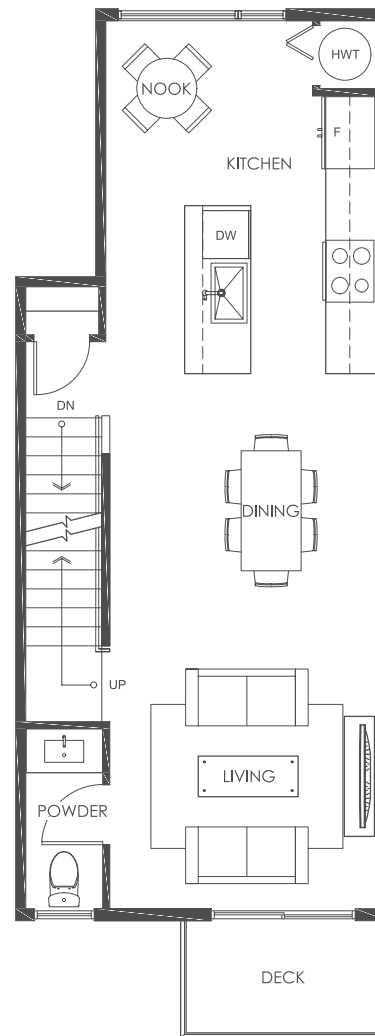
Total (approx.) 1,701 sf



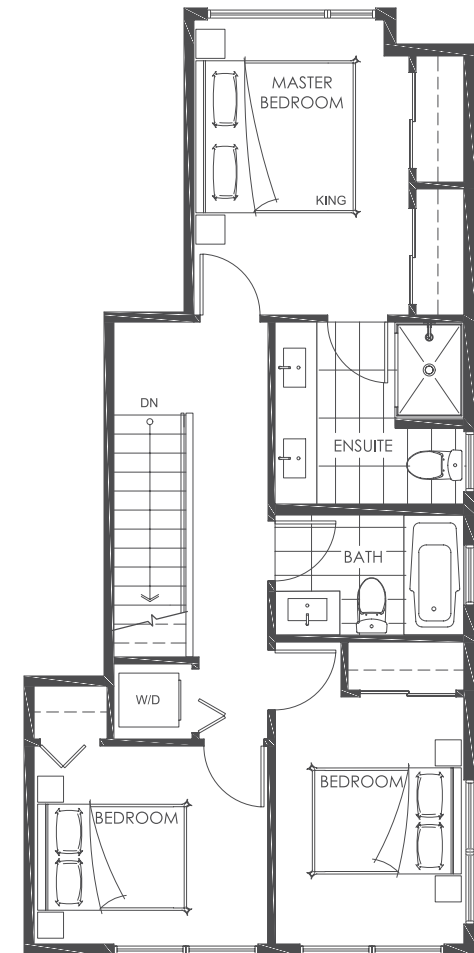
PARC THOMPSON



LOWER



MAIN



UPPER