

EvelYN

by ONNI





Single-Family Homes

True to the spirit of West Coast modernism, the single-family homes at Evelyn offer a collection of sophisticated residences set in the heart of West Vancouver. Evelyn celebrates nature in a village locale—a prestigious new address and elegant living environment, perfected.

Gracefully positioned on Sentinel Hill's rise, these eight private residences are laid out over three floors. Their design incorporates natural materials native to the surroundings and expansive patios offer seamless indoor and outdoor living year-round.

Interior Features



TIMELESS DESIGN

- Premium wide-plank, engineered oak hardwood flooring
- Automated lighting control in living areas
- Automated sound control with built-in speakers in main living areas
- Contemporary glass wall-enclosed stairs for ultimate open plan living
- Flat painted ceiling with recessed pot lighting throughout
- Sleek roller shades with remote control operation in select areas
- Full size high efficiency front loading washer and dryer with laundry sink and cabinet for organizing
- Generous in-suite storage in all bedrooms with multiple oversized closets featuring contemporary flat panel doors, modern brushed nickel door hardware and upgraded wood-look closet organizers
- Forced air heating and cooling
- Spacious two car garage with ample storage
- Expansive outdoor living areas are equipped with water, gas and power connections

SPACIOUS KITCHENS

- Designer appliance kitchens
 - o Sub-Zero 36" wood-paneled integrated fridge with dual freezer drawers at the bottom
 - o Sub-Zero 30" full sized integrated wine storage with refrigerator drawers for other beverages
 - o Wolf 36" 5 burner gas cooktop
 - o Wolf 30" convection wall oven
 - o 24" full size wood-paneled integrated dishwasher
 - o Faber 36" low-profile slide out 3 speed hood fan
 - o Panasonic stainless steel under counter microwave with trim kit
- Natural stone quartzite with breakfast bar overhang and stone waterfall on oversized islands
- Full height stone backsplash to match countertops
- European-inspired flat panel wood cabinets with accent painted upper cabinets
 - o Cypress scheme - stained walnut veneer and white satin painted cabinets
 - o Hollyburn scheme - stained ash veneer and white satin painted cabinets



SPACIOUS KITCHENS *(CONTINUED)*

- *Soft close mechanism on all kitchen doors and drawers*
- *Double bowl stainless steel under mounted sink with polished chrome kitchen faucet with extractable spray and in-sink waste disposal*
- *Under cabinet recessed LED strip lighting to illuminate workspace*
- *Plug-in USB outlet included in the kitchen for convenient charging of your smartphone or electronic device*
- *Second family room with wetbar*
 - o *Kitchenette available as an upgrade*

ELEGANT BATHROOMS

- *All bathrooms*
 - o *Nuheat electric floor heating system with signature touchscreen and wireless control*
 - o *Generously sized floating vanity features polished natural stone countertops and under mount wash basin, wood veneer cabinets, soft close drawers, and motion controlled under cabinet accent lighting*
 - o *Oversized walk-in showers encased in frameless glass and floor-to-ceiling marble tile feature hidden tile drain, rain shower head, and hand shower on slide bar*
 - o *Water-conserving elongated toilet*
 - o *Polished chrome bathroom accessories*
- *Master ensuite*
 - o *Honed limestone tile floor and walls, oversized dual vanity and enclosed toilet for added privacy*
 - o *In-wall back-lit medicine cabinet behind vanity mirror for convenient storage*
 - o *Freestanding soaker tub with floor mounted tub filler and hand shower for ultimate relaxation*

Single-Family Homes

3 Bedroom + Family | 3 Bath
Interior: 2,425 - 2,585 sf
Exterior: 755 sf
Total: 3,180 - 3,340 sf



Plan SFH 1

3 BEDROOM + FAMILY ROOM

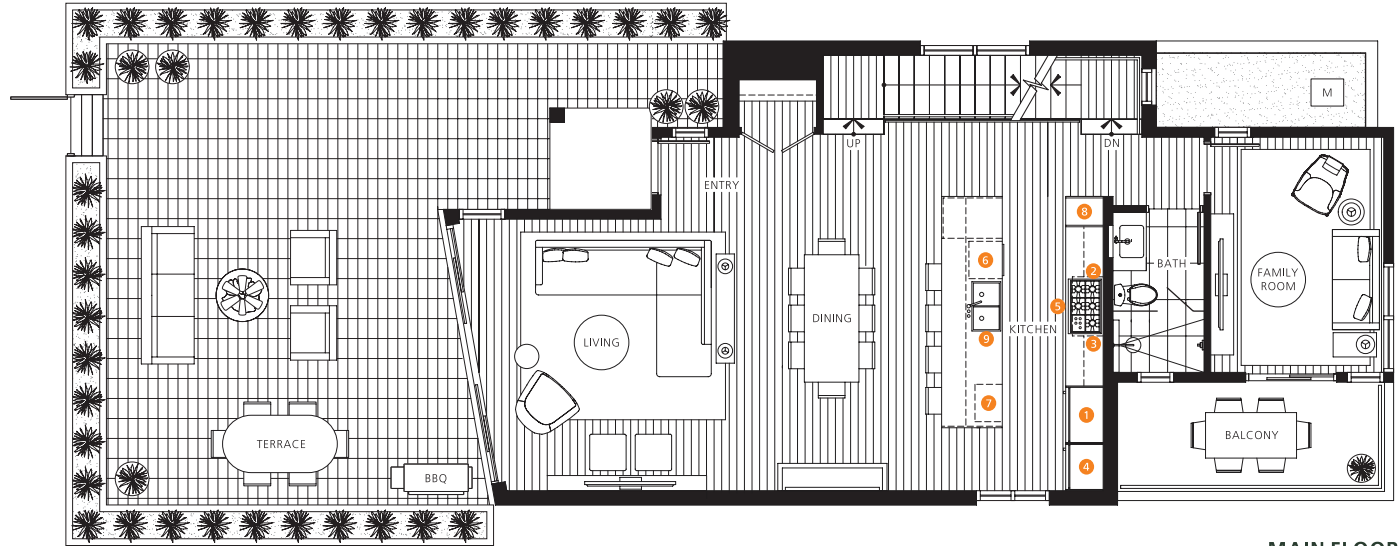
2,585 sf Living

755 sf Outdoor

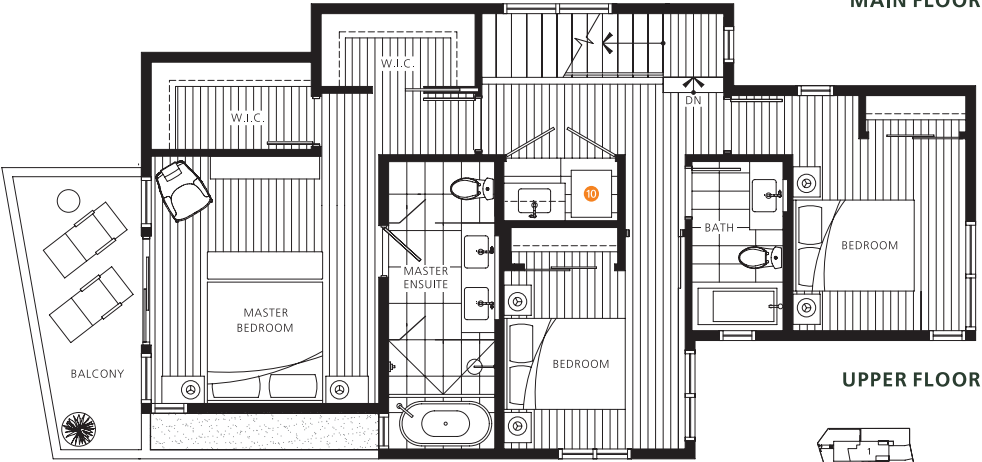
3,340 sf Total



GROUND FLOOR



MAIN FLOOR

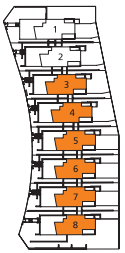


UPPER FLOOR

- 1 36" Sub-Zero Integrated Refrigerator
- 2 36" 5 - Burners Gas Cooktop
- 3 36" Faber Slim Line Hood Fan
- 4 30" Sub-Zero Integrated Wine Fridge
- 5 30" Wolf Wall Convection Oven
- 6 Miele Integrated Dishwasher
- 7 Panasonic Microwave
- 8 Pantry
- 9 Sink Disposal
- 10 Full Size Maytag Stacked Washer & Dryer
- 11 24" Undercounter Beverage Fridge

KITCHENETTE UPGRADE OPTION

- 12 24" Blomberg Integrated Refrigerator
- 13 Moveable Island
- 14 24" Microwave Hood Fan
- 15 18" Blomberg Dishwasher



Plan SFH 2

3 BEDROOM + FAMILY ROOM

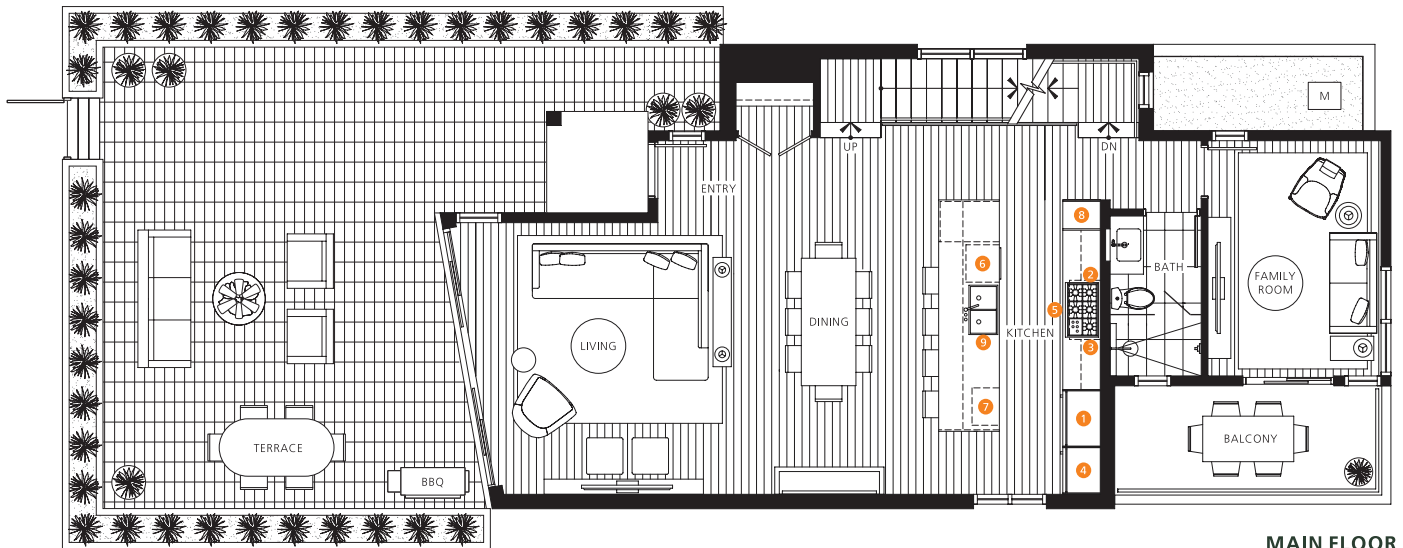
2,425 sf Living

755 sf Outdoor

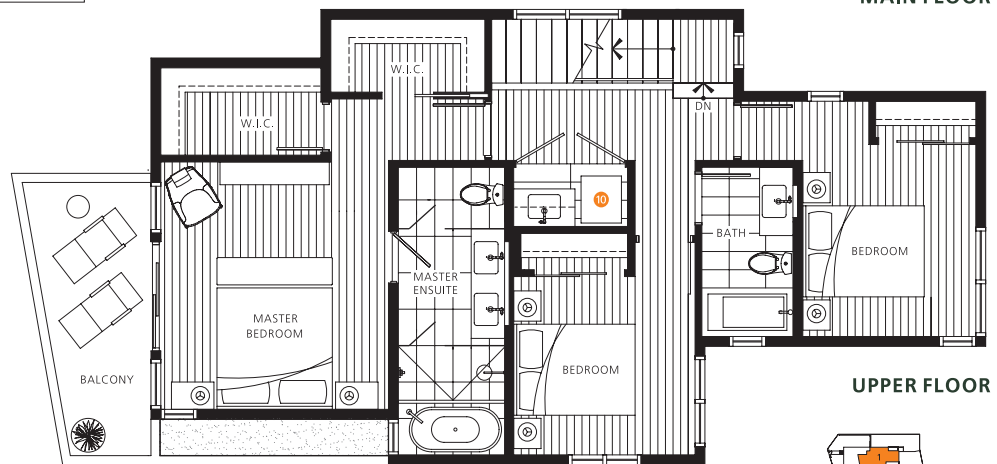
3,180 sf Total



GROUND FLOOR



MAIN FLOOR

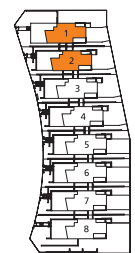


UPPER FLOOR

- 1 36" Sub-Zero Integrated Refrigerator
- 2 36" 5 - Burners Gas Cooktop
- 3 36" Faber Slim Line Hood Fan
- 4 30" Sub-Zero Integrated Wine Fridge
- 5 30" Wolf Wall Convection Oven
- 6 Miele Integrated Dishwasher
- 7 Panasonic Microwave
- 8 Pantry
- 9 Sink Disposal
- 10 Full Size Maytag Stacked Washer & Dryer
- 11 24" Undercounter Beverage Fridge

KITCHENETTE UPGRADE OPTION

- 12 24" Blomberg Integrated Refrigerator
- 13 Moveable Island
- 14 24" Microwave Hood Fan
- 15 18" Blomberg Dishwasher



OUR PAST. YOUR FUTURE.



LEVEL FURNISHED LIVING,
LOS ANGELES



GILMORE PLACE, VANCOUVER



1335 HOWE, VANCOUVER



CAMBIE GARDENS, VANCOUVER



THE HUDSON, CHICAGO



CENTREVUE, NORTH VANCOUVER

The Onni Group is one of North America's leading private real estate developers, with extensive experience designing, developing, building and managing innovative projects. As a fully integrated company that directly oversees every step in the development process, Onni has built over 15,000 homes in the past decade.

In addition, the company owns and manages 10.5 million sq. ft. of commercial property; and over 7,200 rental apartment units and has an additional 28 million sq. ft. of space in different phases of development. With offices in Vancouver, Toronto, Chicago, Los Angeles, Seattle, Phoenix and Mexico, Onni continues to expand and diversify into new markets throughout North America.

Each home at Evelyn is backed by a comprehensive 2-5-10 year National Home Warranty that provides 2 full years in-home coverage for workmanship and materials, 5-year water penetration coverage and 10-year structural coverage for added peace of mind.