



# THE MARK

The  
PENTHOUSE COLLECTION  
4701 - 1372 Seymour Street, Vancouver, BC



# Welcome

The Mark. The apex of a life fully lived. Connected to every cosmopolitan convenience, and known for its luxury amenities, The Mark is one of Downtown Vancouver's most sought after buildings.

Located in historic Yaletown, and just steps from the seawall, The Mark provides quick access to an abundance of amazing cafes and patios — perfect for soaking in the sun and enjoying a cocktail.



From a 24-hour concierge and a rooftop garden terrace with a pool and hot tub, to a state of the art fitness facility and urban agriculture and guest suites. The Mark exudes luxury and is the epitome of modern city living.



# Features

A contemporary two level penthouse residence with a private rooftop oasis and lap pool. Situated on the top two floors, the four bedroom Grand Penthouse is Yaletown’s most elevated penthouse home. Showcasing stunning views from every room, this residence is tailored to sophisticated living with 15’ ceilings, a spacious living room and a formal dining room for entertaining. The gourmet kitchen opens to an everyday dining area and comfortable media room as well as a 1,000 bottle climate-controlled wine wall. The master bedroom is outfitted with a spa-style bathroom, separate dressing room and the latest in home automation and climate control.



Home automation system for fully-integrated audio, lighting, security and blind controls



Four suite-style bedrooms all with private bathrooms and walk-in closets



Large His and Hers washrooms off living room, perfect for entertaining



Integrated Sub-Zero temperature controlled wine fridge wall



Chefs kitchen with a 14 foot granite countertop and a Wolf 6 burner gas range



Integrated drop-down projector and screen for convenient viewing and seamless storage



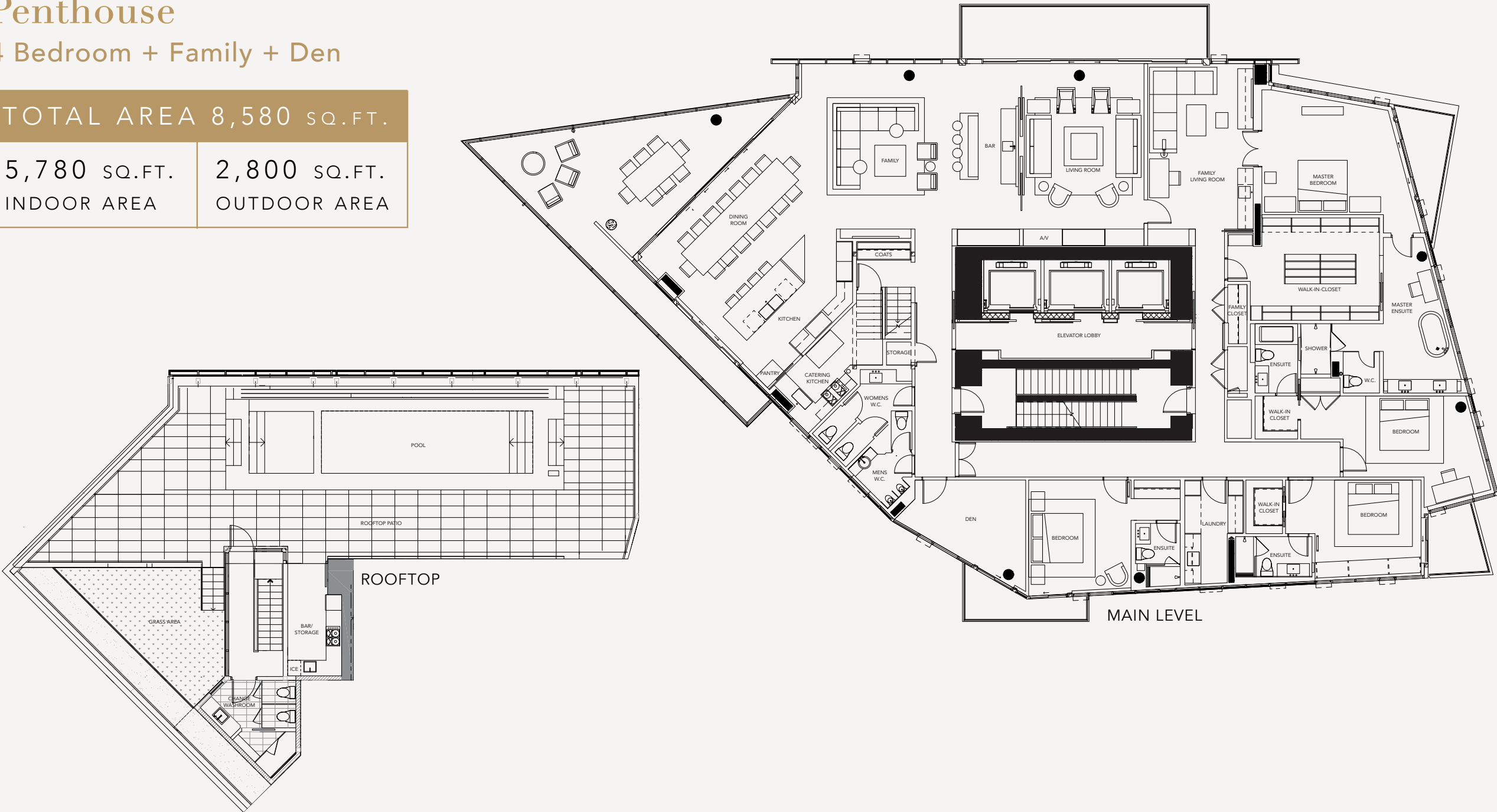
Private Rooftop Oasis with a pool and various lounge and dining areas



# Penthouse

## 4 Bedroom + Family + Den

TOTAL AREA 8,580 SQ.FT.		
5,780 SQ.FT.	2,800 SQ.FT.	
INDOOR AREA	OUTDOOR AREA	







# Private Rooftop Oasis



Private lap pool with retractable ceiling for year-round comfort



Gas Fire Pit for cozy evenings on the patio



Unparalleled views from every angle



Sun-drenched lounge chairs on the grass deck



Custom feature blue agate stone wall with backlit LED lighting



Convenient outdoor dining area off main kitchen





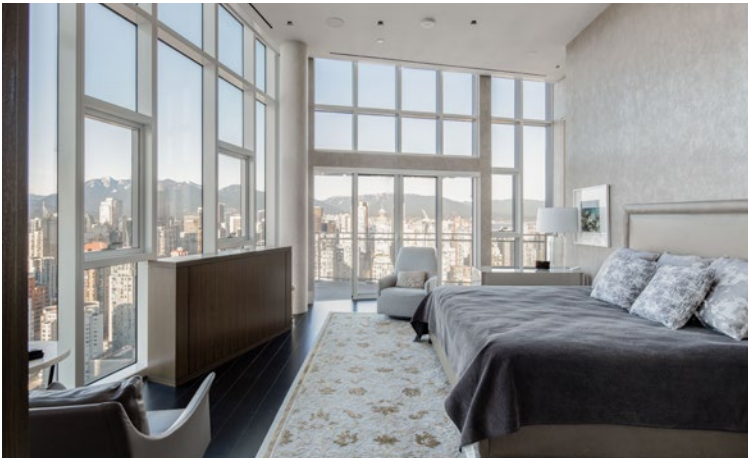


## Views

Articulated toward English Bay and the islands, The Mark Penthouse was designed to enhance these views – commanding unparalleled, endless vistas of one of the world’s most enviable urban horizons. Personal panoramas offer centre stage views over glimmering waters, city and mountain silhouettes that transform into a varying canvas of majestic backdrops from sunrise to sunset. Air. Sun. Stars. A fresh perspective to what’s above and beyond.











# Over Five Decades of Forward Thinking Design

The Onni Group is one of North America’s leading private real estate developers, with extensive experience designing, developing, building and managing innovative projects. As a fully integrated company that directly oversees every step in the development process, Onni has built over 15,000 homes.

In addition, the company owns and manages more than 11.5 million square feet of commercial property, over 7,200 rental apartment units, and has an additional 28 million square feet in various phases of development. With offices in Vancouver, Toronto, Chicago, Los Angeles, Seattle, Phoenix and Mexico, Onni continues to expand and diversify into new markets throughout North America.