

The background is a solid black field populated with numerous horizontal bars of varying lengths and positions. Most bars are a light gray color, while a few are a bright cyan blue. These bars are scattered across the entire frame, creating a sense of motion or digital data. The word 'ALASKA' is centered on the right side of the image.

# ALASKA

WELCOME TO BOUTIQUE LIVING IN BRENTWOOD





Artist's rendering

# ALASKA

A refined vision of glass, steel, and concrete,

Alaska cuts a striking figure against the skyline. Its graceful, staggered balconies appear to cascade along the building exterior.

## LIVE WELL<sup>®</sup> ON THE FOREFRONT OF BRENTWOOD

Health and well-being have been at the core of the design process at Alaska from the start. Forward-thinking architecture, carefully curated interiors, clever space planning, and thoughtful landscape design distinguish this boutique collection of homes. It's a place to build a new life.



VIEWS OF CITYSCAPE,  
PARKS & MOUNTAINS

ALASKA



Alaska is your gateway to Brentwood. Curl up with a glass of wine after a long day and enjoy the views. They're spectacular.



# A STUNNING WELCOME HOME

The glass-enclosed lobby at Alaska feels like an art museum — lofty, bathed in natural light, inviting quiet contemplation. Elemental wood and stone walls and floors echo the natural beauty of the Pacific Northwest.

# ALASKA



Artist's rendering



# ALASKA



## FALL IN LOVE WITH HOME

Spending time in your Alaska home is a pleasure. Natural light floods the open living space through the expansive windows. It's a versatile place where you can work well and live well. The high-quality interior design weaves in considered details with sumptuous textures and patterns.



Artist's rendering of Alaska's gourmet kitchen and open living area in the White colour scheme



# ALASKA



## RELAX AND RECHARGE

At Alaska, your home is your sanctuary. A place to recharge with the people and surroundings that make you feel good. So curl up with a good book or catch up on your favourite show. This space is just for you.



Photo of Alaska's one-bedroom home gourmet kitchen and living area in the White colour scheme



# FEATURES & AMENITIES



## ALASKA BY AMACON

A boutique community of 164 well-appointed homes in a 22-storey concrete tower and podium

- 1, 2 & 3 bedroom apartments
- Garden homes with large private patios
- Loft homes with direct street entry
- Penthouse suites

**Location:** The Brentwood Neighbourhood, 4433 Alaska Street, Burnaby

**Developer:** Proudly developed by Amacon, one of Canada’s most influential real estate development and construction firms, a trusted builder with over 50 years of experience

**Architect:** DYS Architecture, iconic Vancouver architecture firm operating since 1982

**Interior Design:** Jill Bauer Design, boutique Vancouver design firm

## HOTEL-INSPIRED AMENITIES

Live Well®, Work Well® and Play Well® in Alaska’s thoughtfully designed common areas

**A Stunning Welcome Home** — Inspired & informed by nature, Alaska’s silhouette looks different from every angle. Walk through the doors of this tower of sparkling glass & metal into your stunning lobby with soaring double-height ceilings, polished concrete floors, and concierge

- Carefully appointed art & furniture in the brassy-gold and black metal lobby elevate your every entry and exit
- Two high-speed elevators
- Dedicated mail area with New York-inspired design & seating

**The Central Green** — Over 8,000 sq. ft. of outdoor space just for residents

- Outdoor fireplace and lounge area
- Outdoor kitchen with custom built-in gas barbecue
- Children’s play area, including playhouse, children’s seating, and other fun play equipment
- Designated urban agricultural area
- Benches and picnic tables throughout, plus pergola with shaded seating

### Indoor Amenities

- Two-level Fitness and Yoga Centre
- Social Lounge with Gourmet Kitchen and Dining Room

- TV Lounge and Reading Room with comfortable sofas and armchairs
- Games Room with lounge seating
- Children’s Play Room
- The Think Lab — a quiet space to work or reserve for meetings or presentations
- Guest Suite available for residents to reserve for out-of-town guests

## HOME INTERIORS

Calming interiors with thoughtfully curated materials in rich textures and patterns

- Two neutral colour palettes — White and Grey
- High-quality laminate floor with 7-inch-wide planks
- Door hardware in satin nickel
- Roller shade window coverings throughout
- Closet organizers in all walk-in closets
- Laundry closet with washer and dryer included (see Appliance Package below)
- Smooth finish ceilings throughout, overheight in bedrooms and main living areas

## KITCHENS

A fully equipped culinary workspace designed to make cooking a pleasure

- Quartz countertops (3-cm thick) and backsplash
- Sleek flat-panel cabinets
- Under-mount single-basin sink
- Pull-out, dual-spray faucet
- Open accent shelving in Rift Cut Oak or Veranda Teak finish
- Under-cabinet task lighting

### Appliance Package

- European stainless steel gas range cooktop with four or five gas burners (24" for 1 bed homes and 30" for 2 & 3 bed homes)
- European stainless steel wall oven (24" for 1 bed homes and 30" for 2 & 3 bed homes)
- European slide-out stainless steel hood fan
- European integrated dishwasher

- Integrated Energy Star refrigerator
  - 1 beds – 24” refrigerator with convenient bottom-drawer freezer
  - 2 & 3 beds – 32” French door refrigerator with internal automatic icemaker and drawer freezer
  - Penthouses – 36” French door refrigerator with internal automatic icemaker and drawer freezer
- Full-sized front-load stacking washer and dryer (located in laundry closet)

## BATHROOMS

Your private haven for relaxation and self-care

- Deep soaker tub
- Frameless glass shower enclosure in ensuites
- Quartz countertop and backsplash, honed concrete look
- Brushed nickel fixtures, Moen Genta Collection
  - Bath and shower kit with luxurious rain shower head
- American Standard Studio Series toilet
- Marble pattern, large-format porcelain tiles on floors and bathtub/shower surround cultivate a spa-like atmosphere
- Sleek storage
  - Open wall shelving in Rift Cut Oak (White palette) or Veranda Teak (Grey palette)
  - Mirrored medicine cabinet with shelving and LED accent strip lighting
  - Pull-out vanity organizer with adjustable shelves and two stainless steel bins for hairdryers and bathroom accessories

## WARRANTY / SECURITY / SUSTAINABILITY

- Concierge greets guests and residents daily
- Comprehensive Travelers 2/5/10-year home warranty protection
- Hard-wired smoke detector and carbon monoxide monitors in all homes
- Well lit indoor and outdoor public areas with LED lighting
- Every parking stall is EV ready
- Secure storage lockers
- Professional property management by Rancho Management Services

The developer reserves the right to modify or make substitutes to the building design, specifications and floorplans should they be necessary. Renderings, views, and layouts are for illustration purposes only. Sales powered by MLA Canada Realty. E.&O.E.



# ALASKA



Photo of Alaska walk-in closet with included organizational shelving to house all your favourite pieces



## PERFECT FORM AND FUNCTION

The interiors at Alaska were designed to bring pleasure to your everyday life. Every detail has been carefully considered for its form and function — the high-quality kitchen and bathroom, the walk-in closet with smart organizers, the attractive wide-plank flooring. It's a perfect marriage of utility and lasting beauty. This is living well.





Alaska kitchen in Grey colour scheme

# ALASKA



## ROOM OF ITS OWN

Experience the joy of a tidy, organized home. Ample, well-designed storage space throughout Alaska's kitchens and living areas ensures every treasure has a home. Which means you can enjoy the pleasure of clutter-free living.



# ALASKA



Photo of Alaska gourmet kitchen and open living area in the Grey colour scheme



## LET YOUR CULINARY CREATIVITY SHINE

If you enjoy cooking, Alaska's chef-calibre kitchen might just become your favourite place. It's a hub of creativity with features that includes waterfall quartz countertops, a European gas cooktop and wall oven, and a deep-basin under-mount sink. Plus, enjoy options for where you eat. Enjoy a casual bite at the island, a multicourse dinner at the dining table, or an al fresco meal on your spacious balcony.

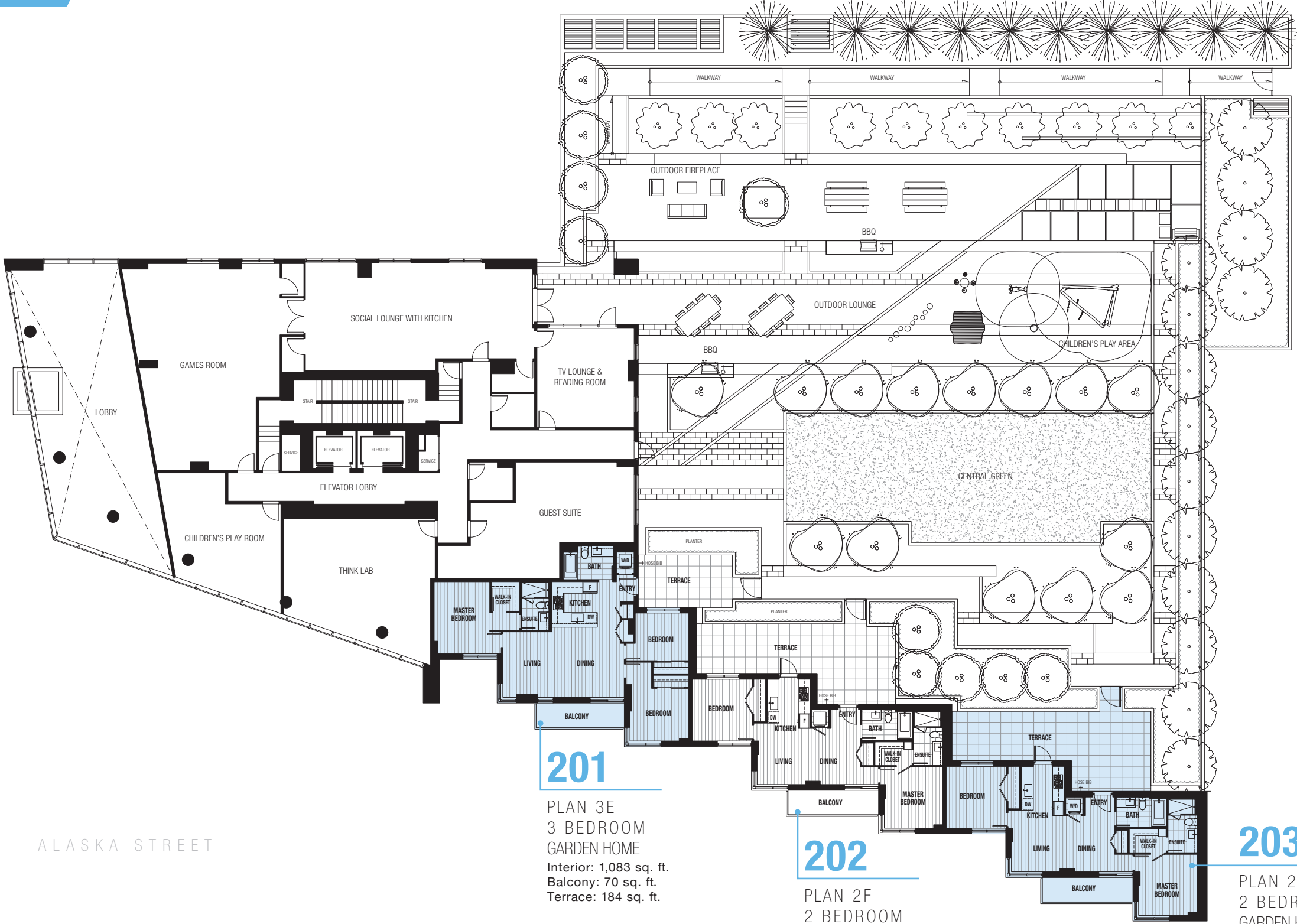


LEVEL 2

ALASKA

WILLINGDON AVENUE

ALASKA STREET



201

PLAN 3E  
3 BEDROOM  
GARDEN HOME  
Interior: 1,083 sq. ft.  
Balcony: 70 sq. ft.  
Terrace: 184 sq. ft.

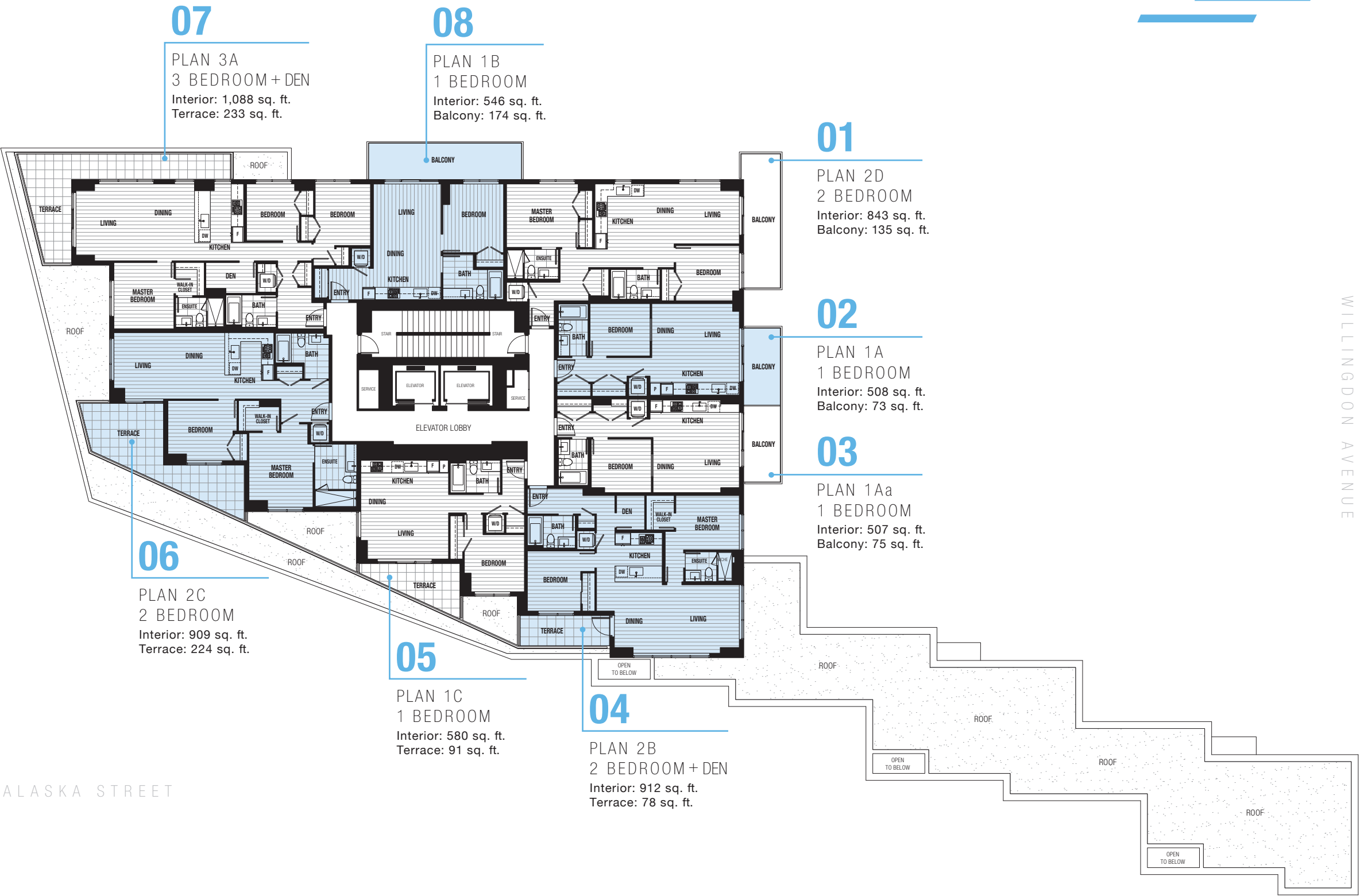
202

PLAN 2F  
2 BEDROOM  
GARDEN HOME  
Interior: 811 sq. ft.  
Balcony: 73 sq. ft.  
Terrace: 422 sq. ft.

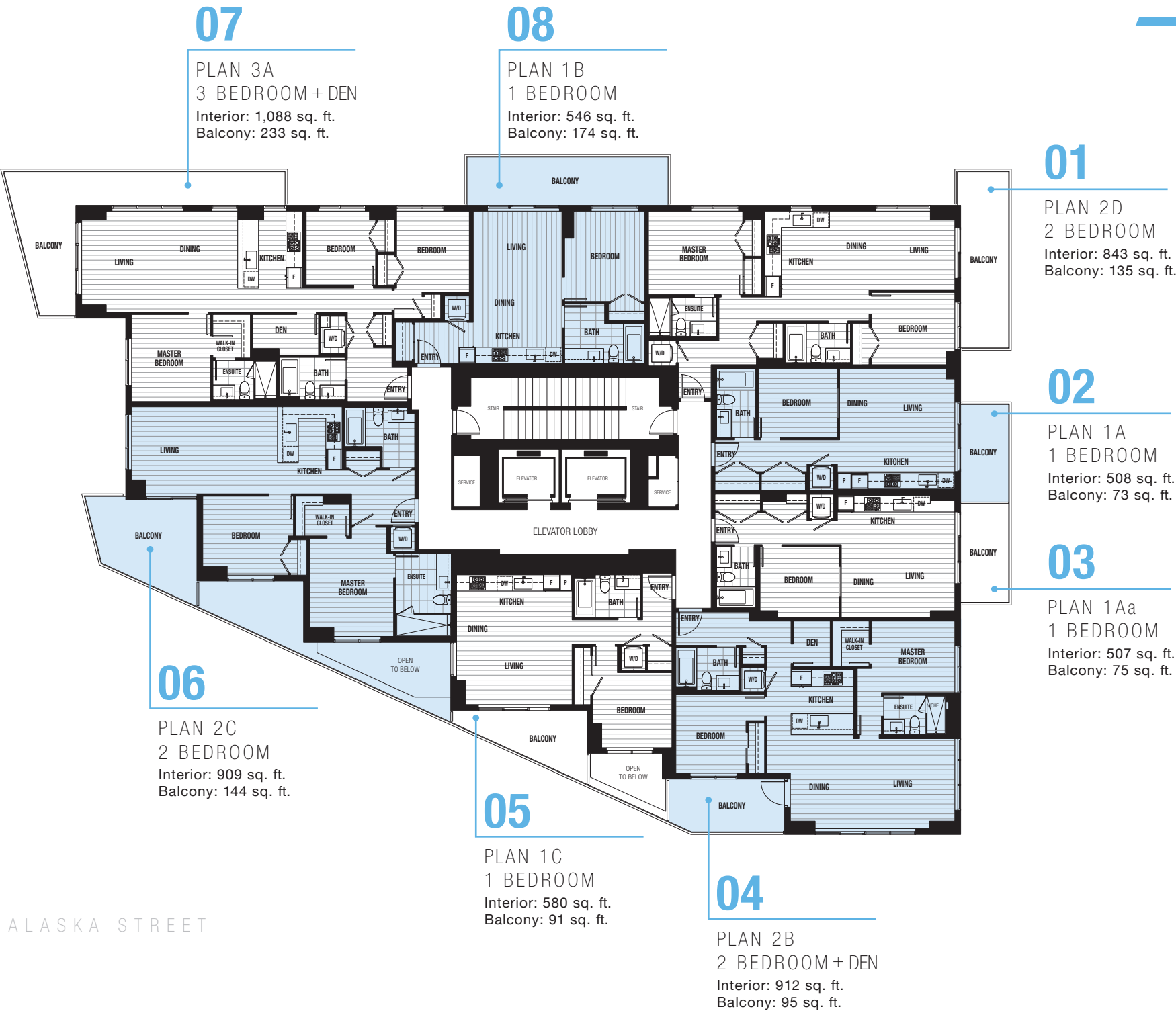
203

PLAN 2F  
2 BEDROOM  
GARDEN HOME  
Interior: 825 sq. ft.  
Balcony: 73 sq. ft.  
Terrace: 422 sq. ft.











07

PLAN 2A  
2 BEDROOM + DEN  
Interior: 928 sq. ft.  
Balcony: 158 sq. ft.

08

PLAN 1Ea  
1 BEDROOM  
Interior: 576 sq. ft.  
Balcony: 58 sq. ft.

01

PLAN 1E  
1 BEDROOM  
Interior: 576 sq. ft.  
Balcony: 58 sq. ft.

02

PLAN 2E  
2 BEDROOM  
Interior: 863 sq. ft.  
Balcony: 134 sq. ft.

03

PLAN 1F  
1 BEDROOM + FLEX  
Interior: 614 sq. ft.  
Balcony: 202 sq. ft.

06

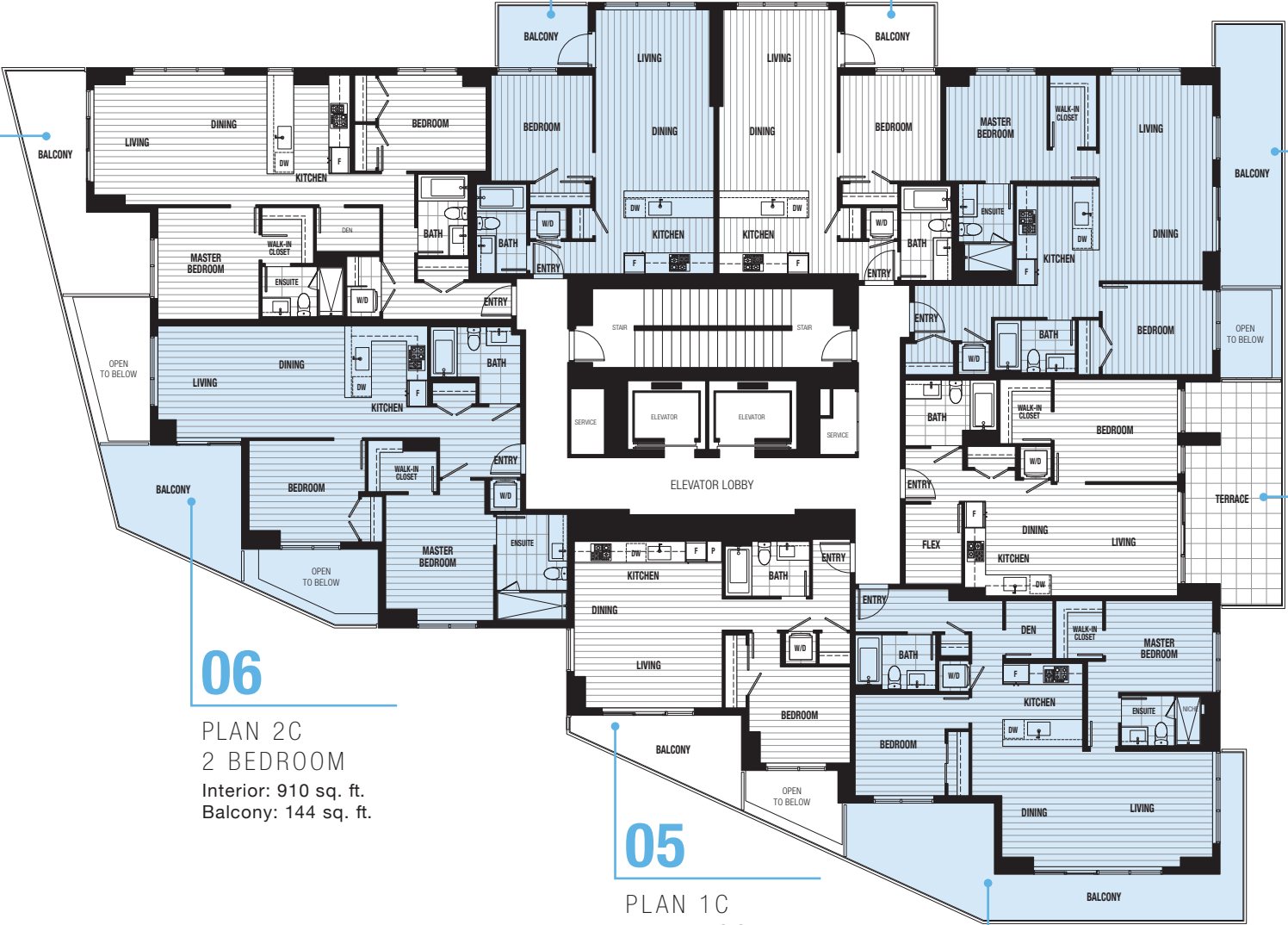
PLAN 2C  
2 BEDROOM  
Interior: 910 sq. ft.  
Balcony: 144 sq. ft.

05

PLAN 1C  
1 BEDROOM  
Interior: 580 sq. ft.  
Balcony: 91 sq. ft.

04

PLAN 2B  
2 BEDROOM + DEN  
Interior: 917 sq. ft.  
Balcony: 287 sq. ft.



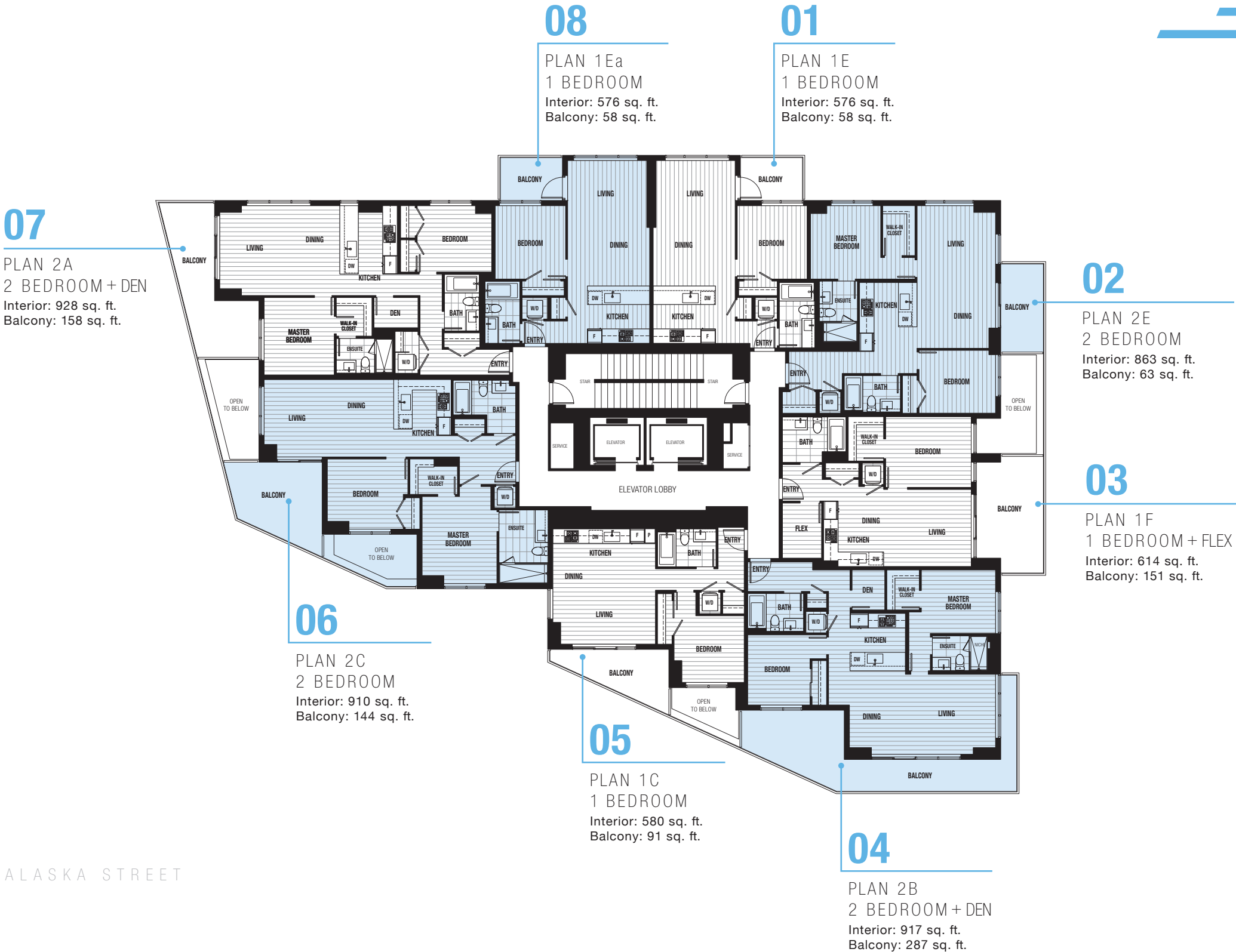
WILLINGDON AVENUE

ALASKA STREET



LEVELS 13 – 21

ALASKA



WILLINGDON AVENUE

ALASKA STREET



03

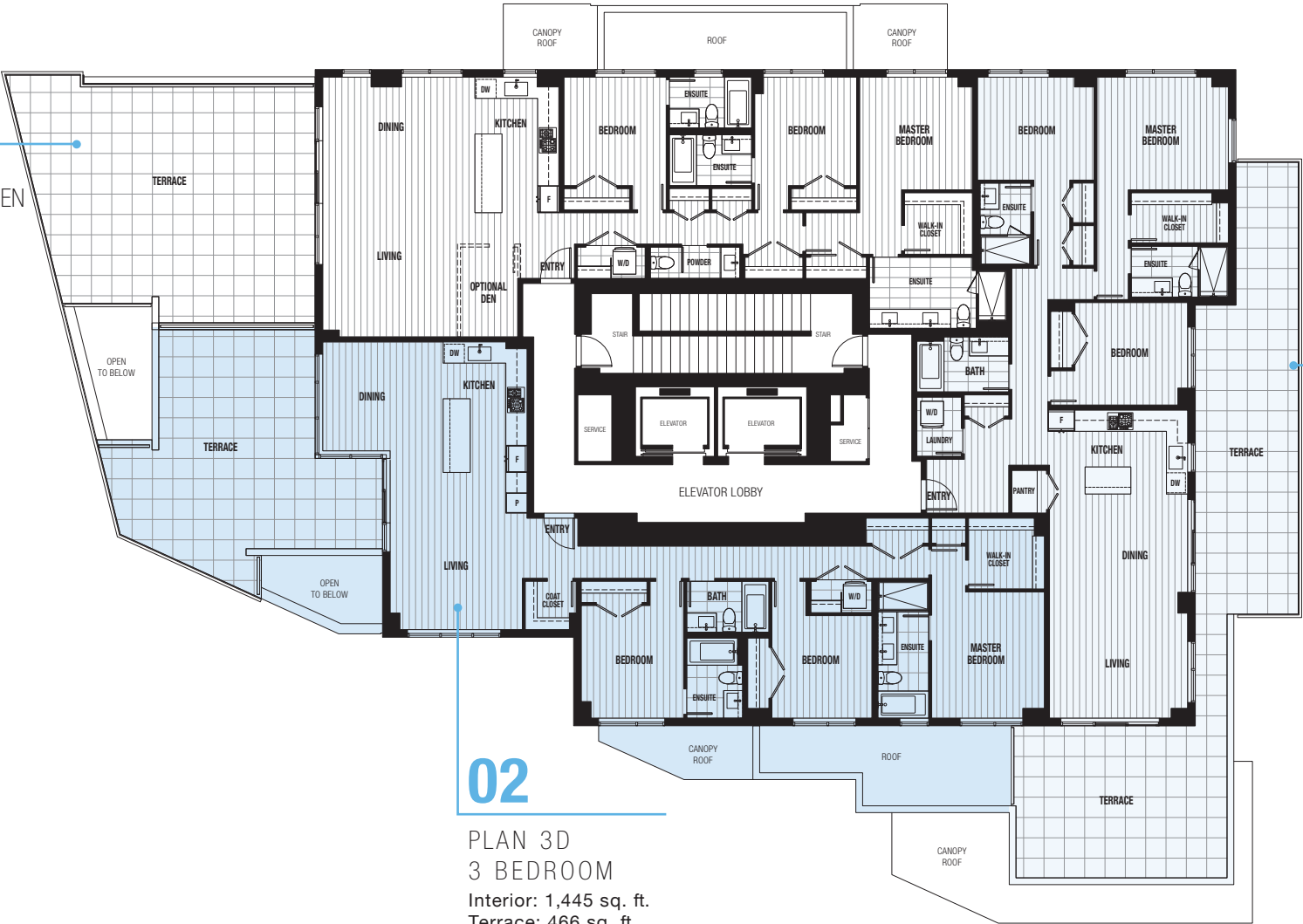
PLAN 3C  
3 BEDROOM + OPTIONAL DEN  
Interior: 1,547 sq. ft.  
Terrace: 648 sq. ft.

01

PLAN 3B  
3 BEDROOM  
Interior: 1,409 sq. ft.  
Terrace: 705 sq. ft.

02

PLAN 3D  
3 BEDROOM  
Interior: 1,445 sq. ft.  
Terrace: 466 sq. ft.



ALASKA STREET

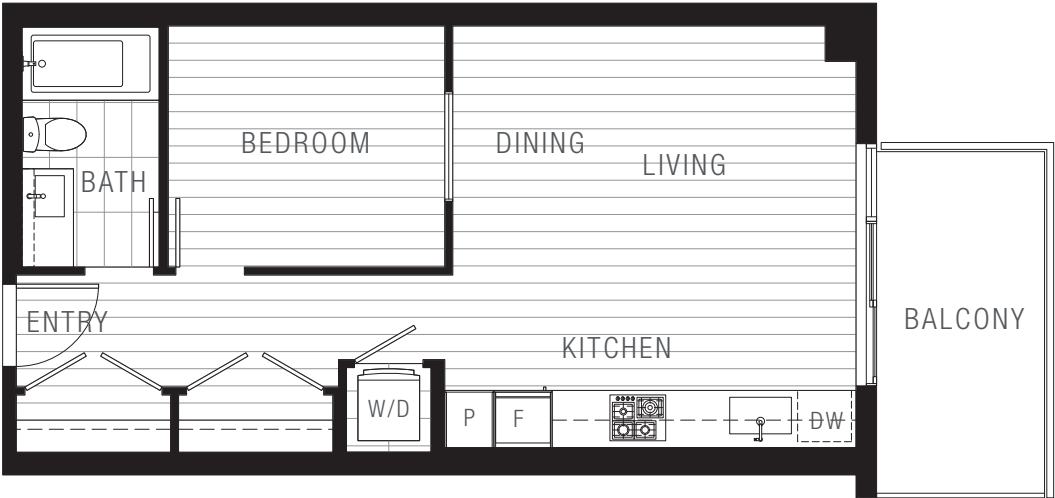
WILLINGDON AVENUE



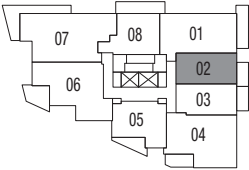
# PLAN 1A

## 1 BED + 1 BATH

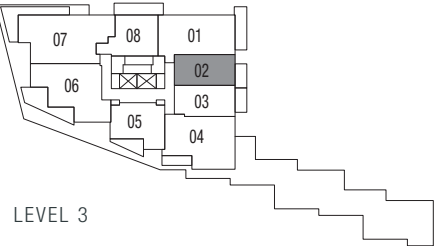
INTERIOR: 508 sq. ft.  
BALCONY: 73 sq. ft.



# ALASKA



LEVELS 4-11



LEVEL 3



# PLAN 1Aa

## 1 BED + 1 BATH

INTERIOR: 507 sq. ft.  
BALCONY: 75 sq. ft.

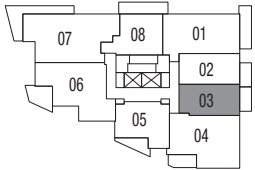


# ALASKA

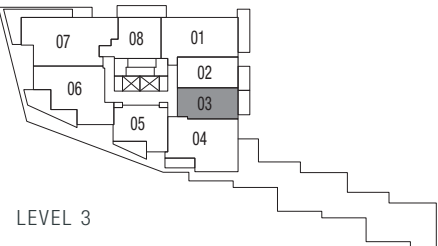
AMACON

LIVE WELL® | WORK WELL®

The developer reserves the right to modify or make substitutes to the building design, specifications and floorplans should they be necessary. Renderings, views, and layouts are for illustration purposes only. Sales powered by MIA Canada Realty. E.&O.E.



LEVELS 4-11



NORTH

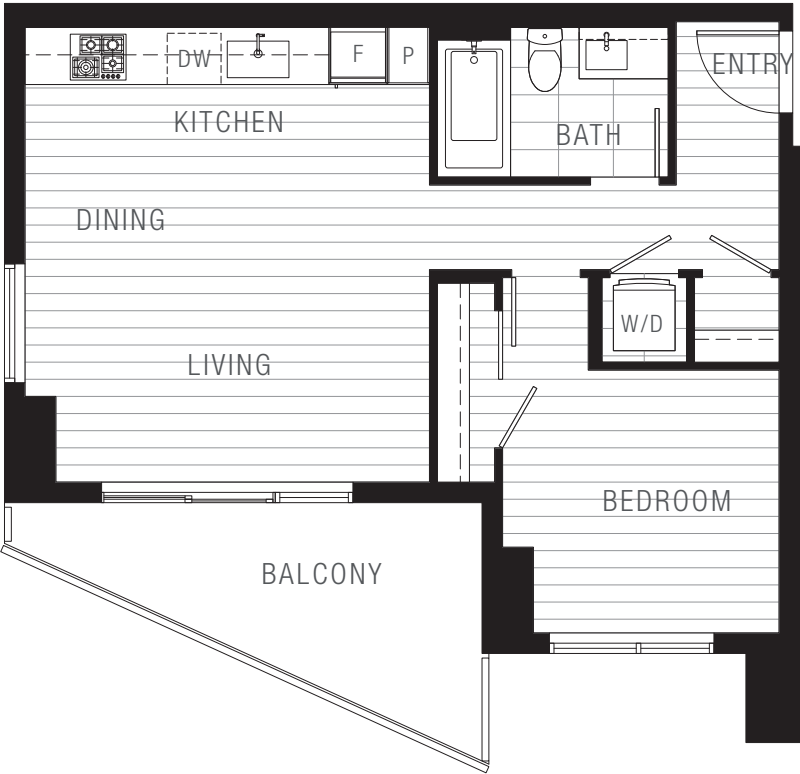
LEVEL 3



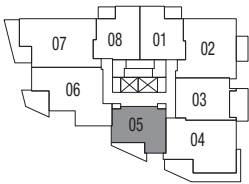
# PLAN 1C

## 1 BED + 1 BATH

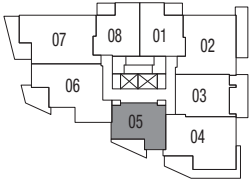
INTERIOR: 580 sq. ft.  
BALCONY: 91–93 sq. ft.



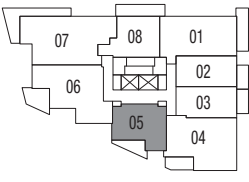
# ALASKA



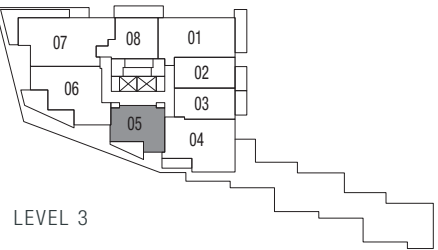
LEVELS 13–21



LEVEL 12



LEVELS 4–11



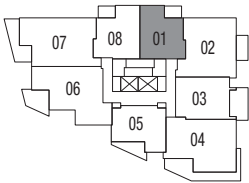
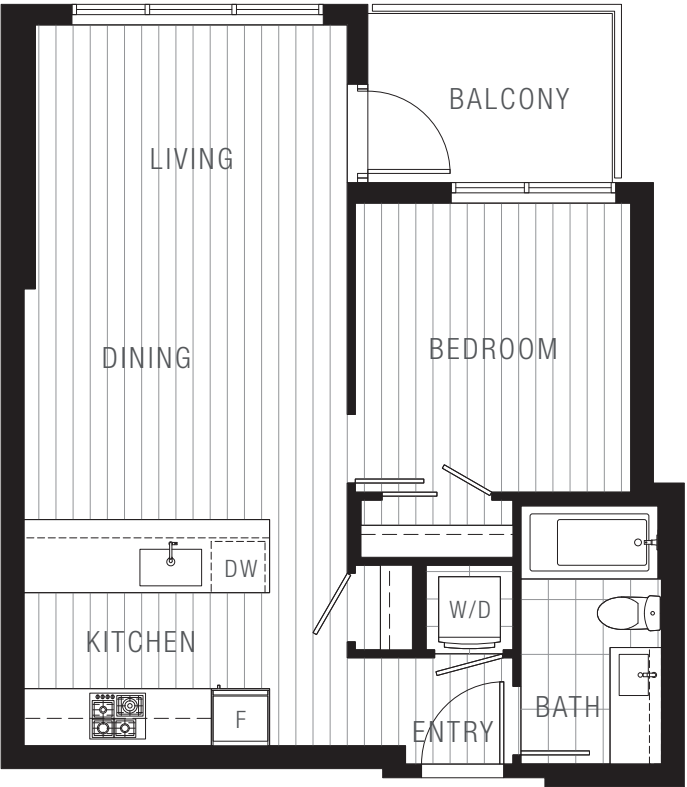
LEVEL 3



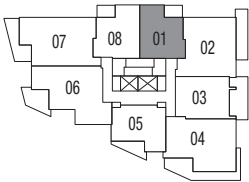


PLAN 1E  
1 BED + 1 BATH

INTERIOR: 576 sq. ft.  
BALCONY: 58–59 sq. ft.



LEVELS 13–21



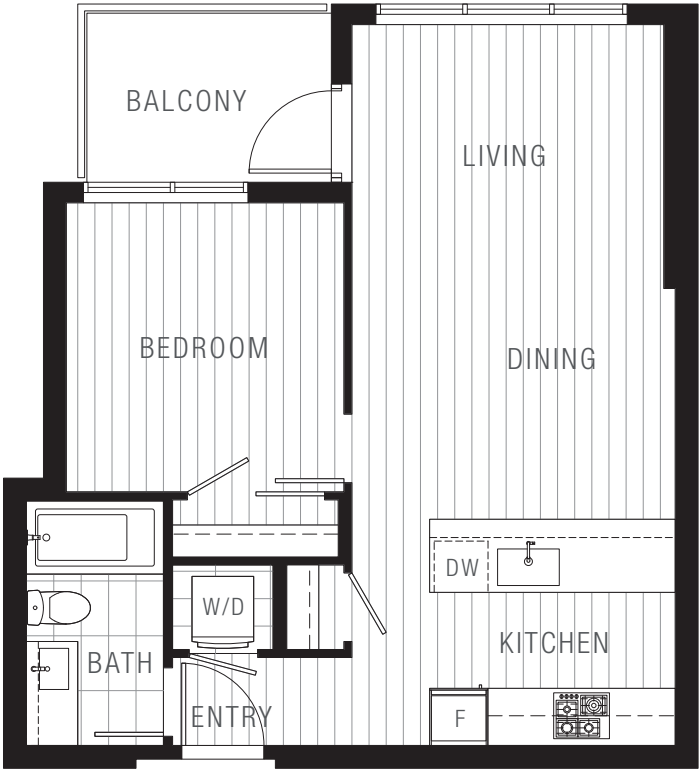
LEVEL 12



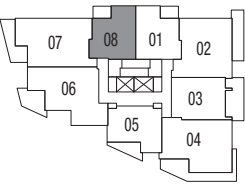


PLAN 1Ea  
1 BED + 1 BATH

INTERIOR: 576 sq. ft.  
BALCONY: 58–59 sq. ft.



LEVELS 13–21



LEVEL 12

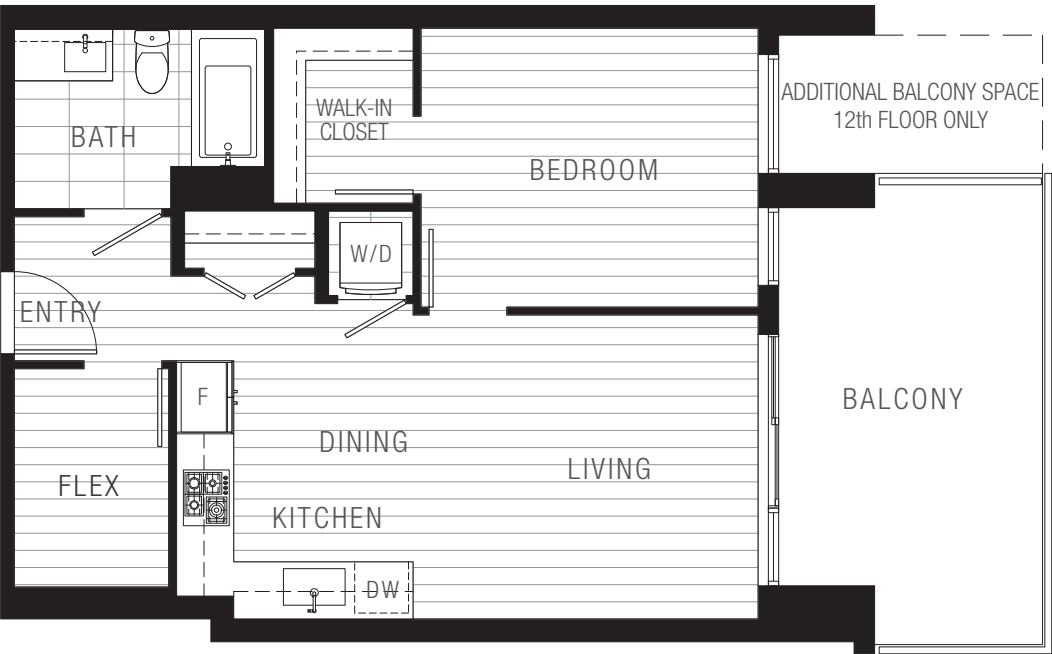




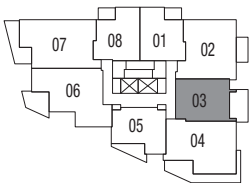
# PLAN 1F

## 1 BED + FLEX + 1 BATH

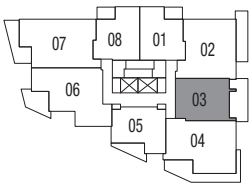
INTERIOR: 614 sq. ft.  
BALCONY: 151–202 sq. ft.



# ALASKA



LEVELS 13–21



LEVEL 12



NORTH

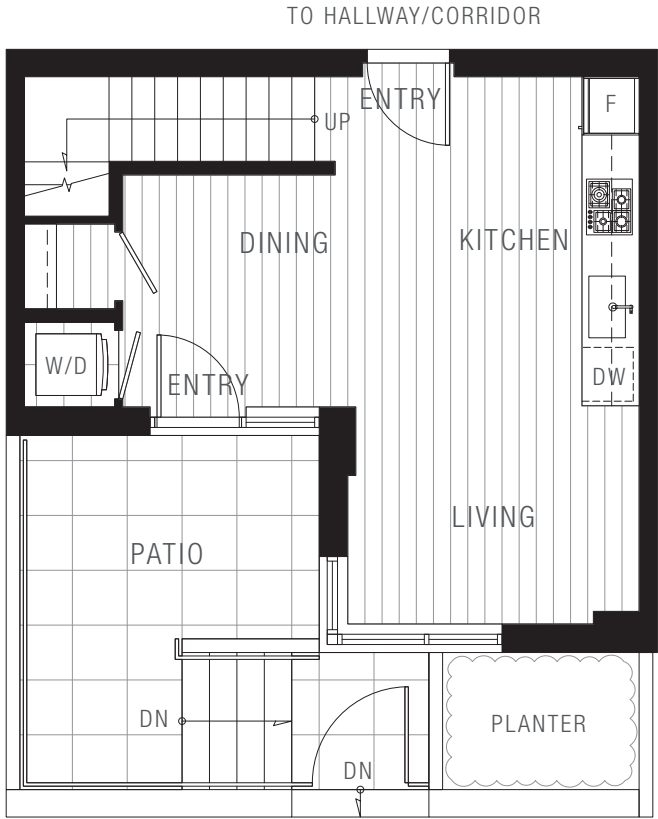


# PLAN 1G

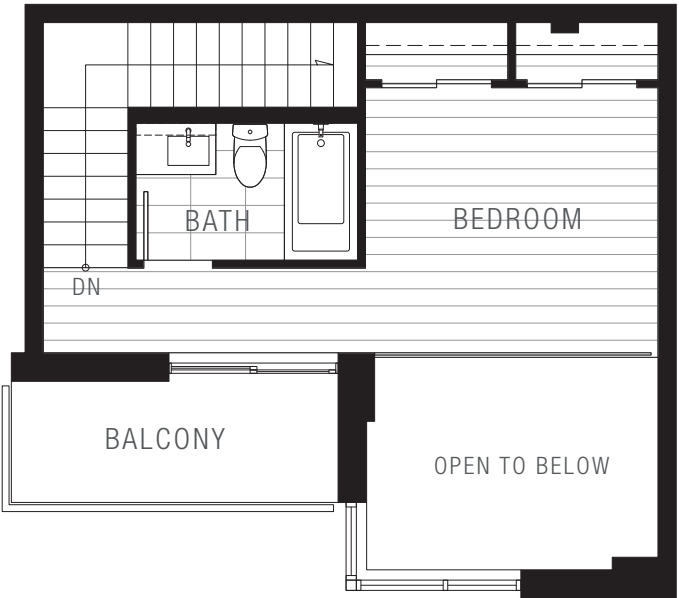
## 1 BED + 1 BATH GARDEN LOFT

INTERIOR: 674–695 sq. ft.  
BALCONY: 46–53 sq. ft.  
PATIO: 109–113 sq. ft.

ALASKA



MAIN FLOOR



2ND FLOOR

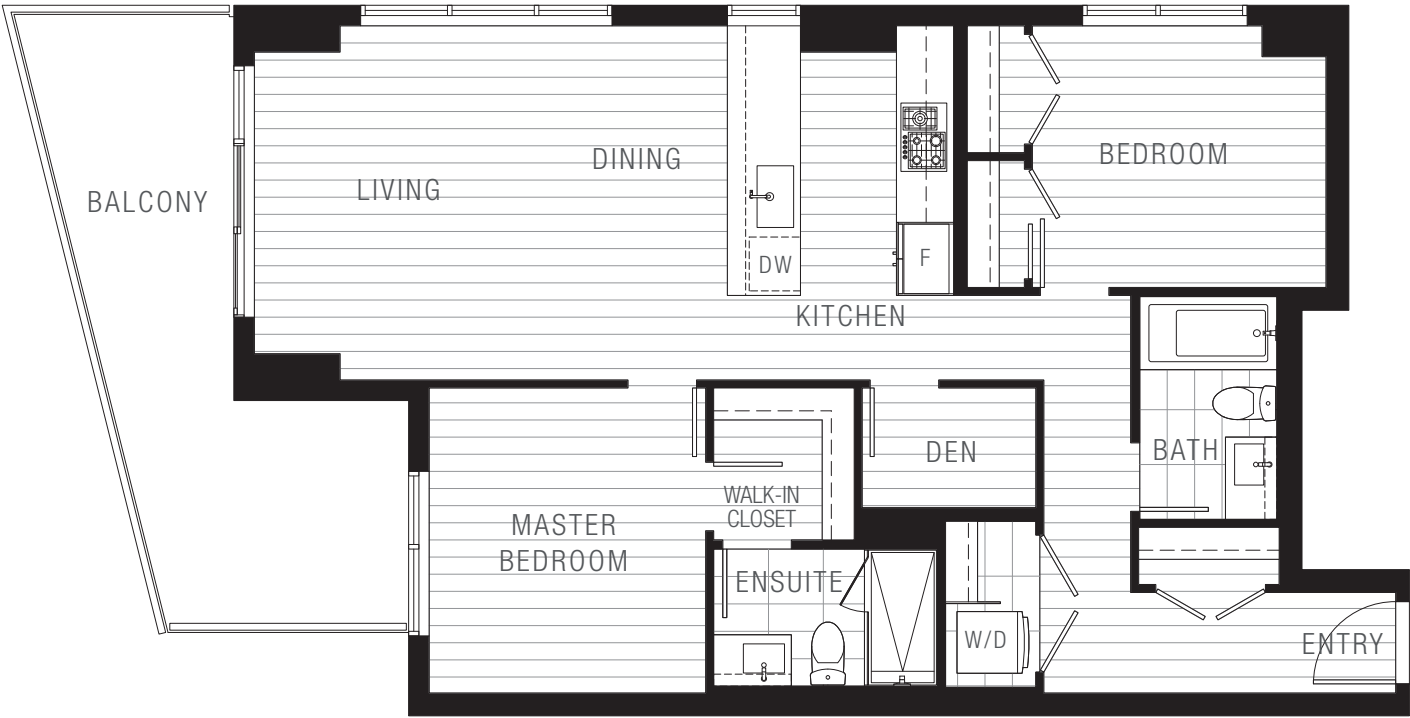


PLAN 2A

2 BED + DEN + 2 BATH

INTERIOR: 928 sq. ft.  
BALCONY: 158 sq. ft.

ALASKA



LEVELS 13-21



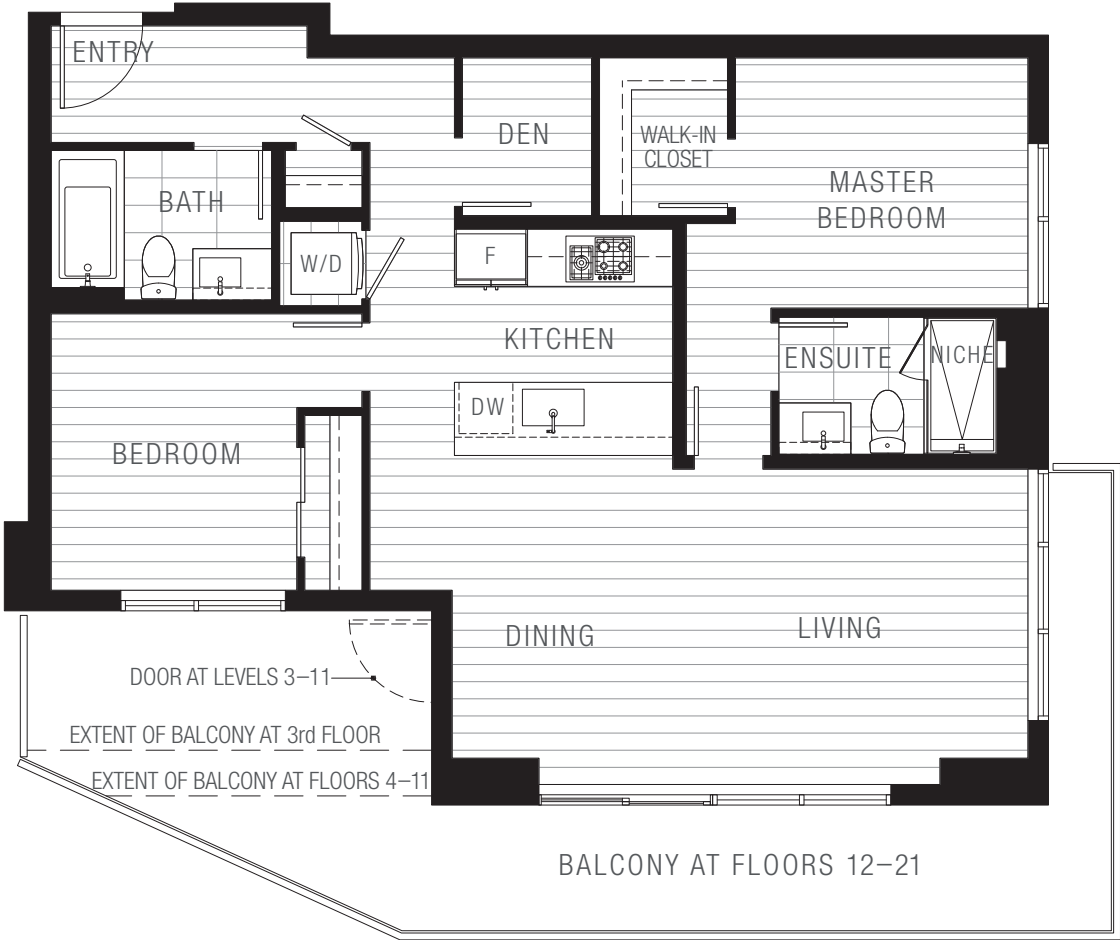
LEVEL 12



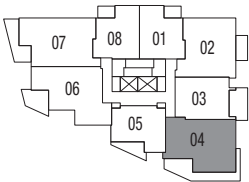
PLAN 2B

2 BED + DEN + 2 BATH

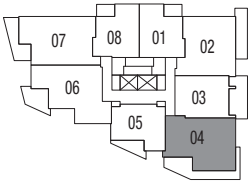
INTERIOR: 912–917sq. ft.  
BALCONY: 95–287 sq. ft.



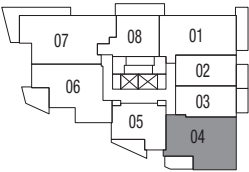
ALASKA



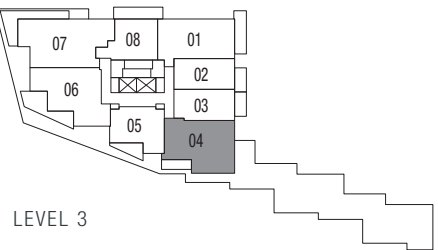
LEVELS 13–21



LEVEL 12



LEVELS 4–11



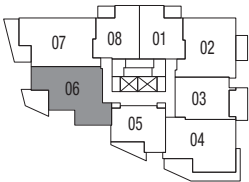
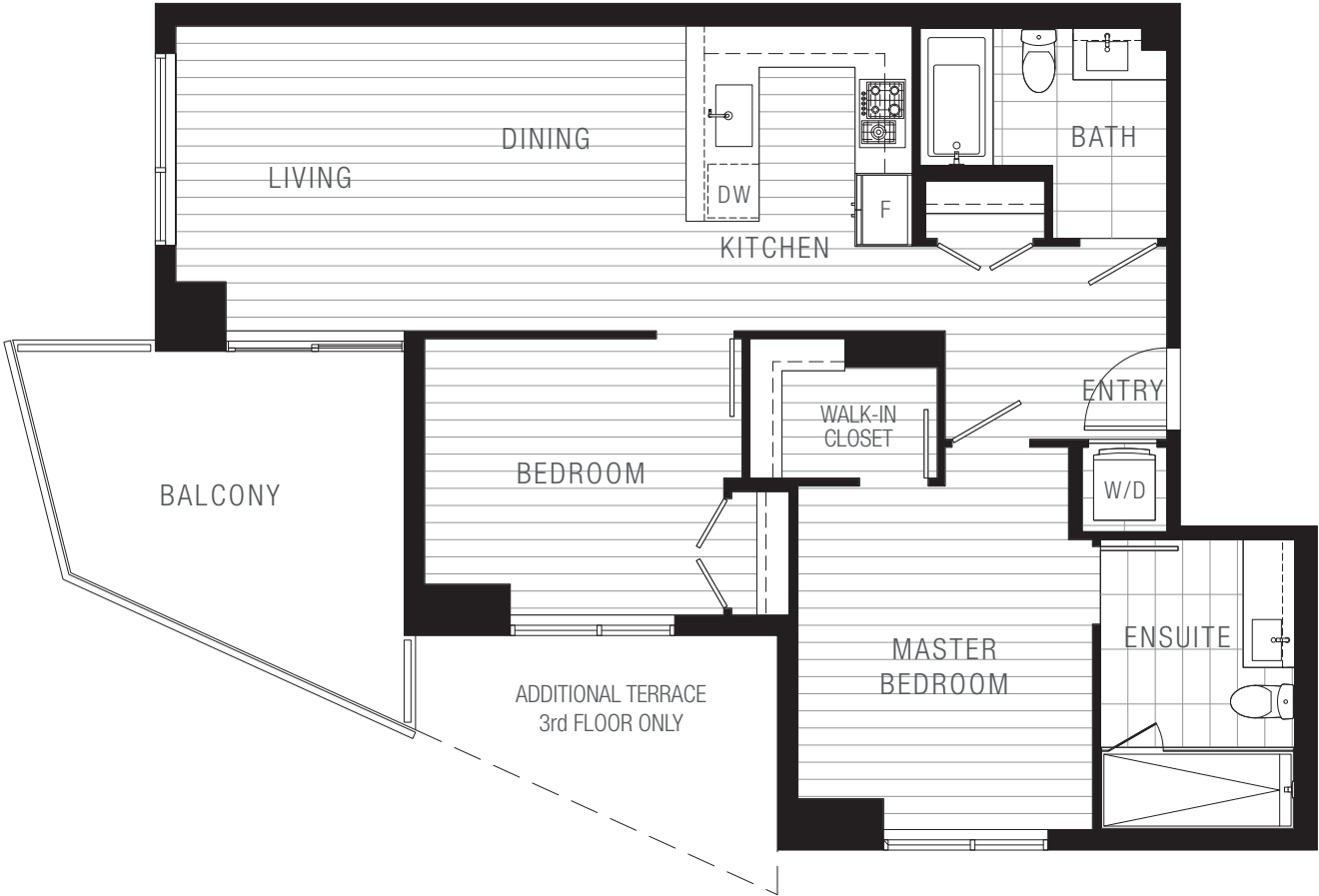
LEVEL 3



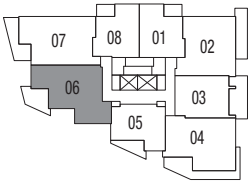
PLAN 2C

2 BED + 2 BATH

INTERIOR: 909–910 sq. ft.  
BALCONY: 144–224 sq. ft.



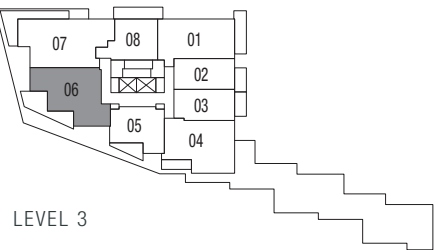
LEVELS 13–21



LEVEL 12



LEVELS 4–11



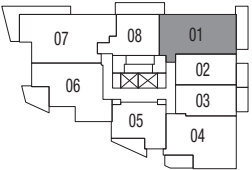
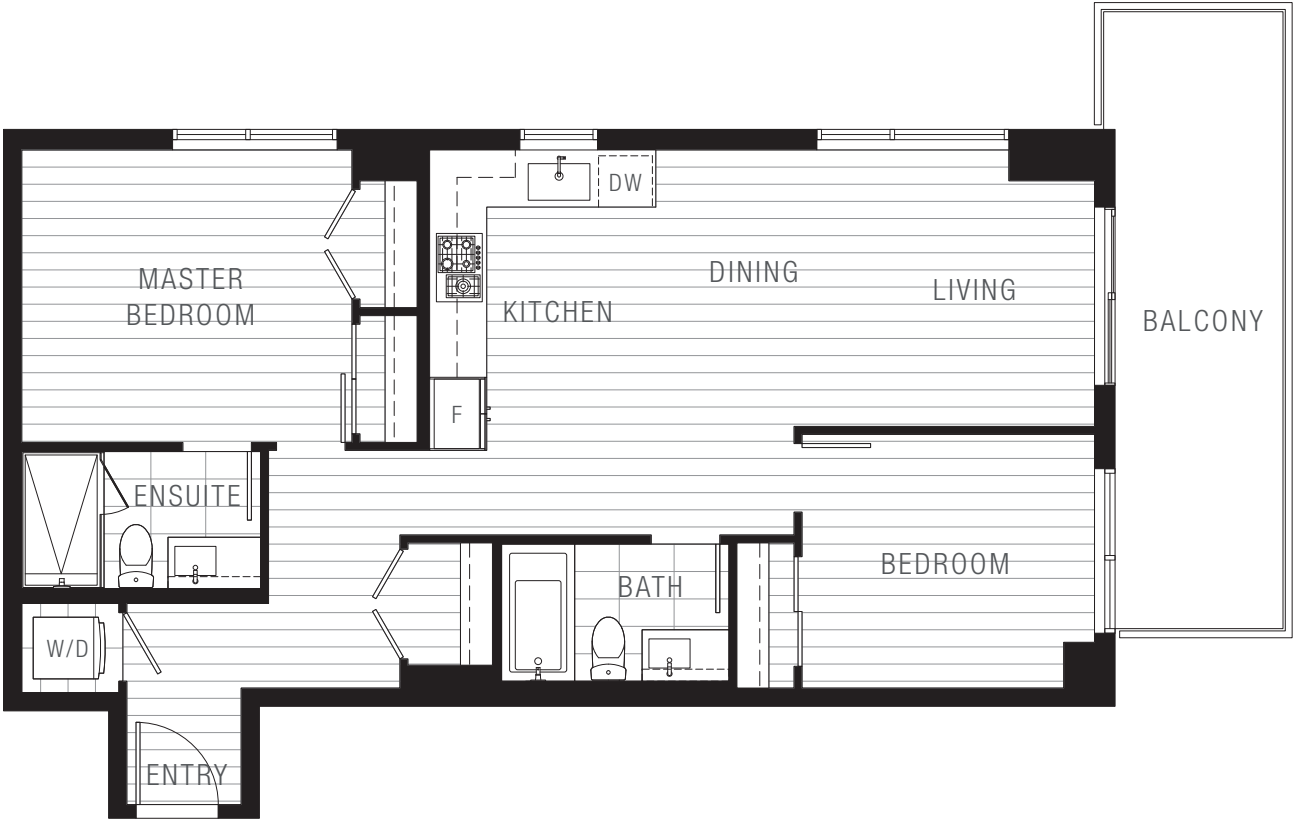
LEVEL 3



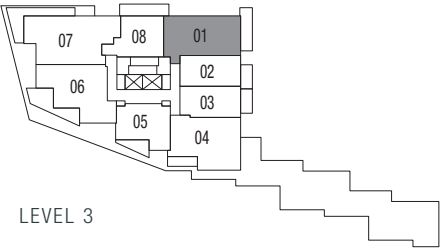


PLAN 2D  
2 BED + 2 BATH

INTERIOR: 843 sq. ft.  
BALCONY: 135 sq. ft.



LEVELS 4-11



LEVEL 3

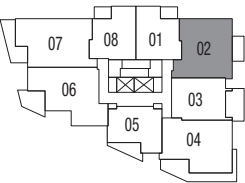


NORTH

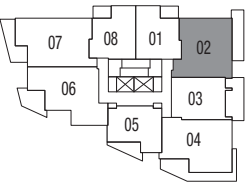


PLAN 2E  
2 BED + 2 BATH

INTERIOR: 863 sq. ft.  
BALCONY: 63–134 sq. ft.



LEVELS 13–21



LEVEL 12



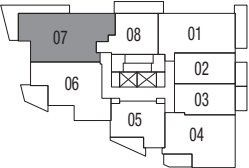


PLAN 3A

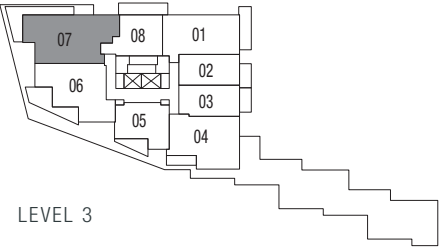
3 BED + DEN + 2 BATH

INTERIOR: 1,088 sq. ft.  
BALCONY: 233 sq. ft.

ALASKA



LEVELS 4-11



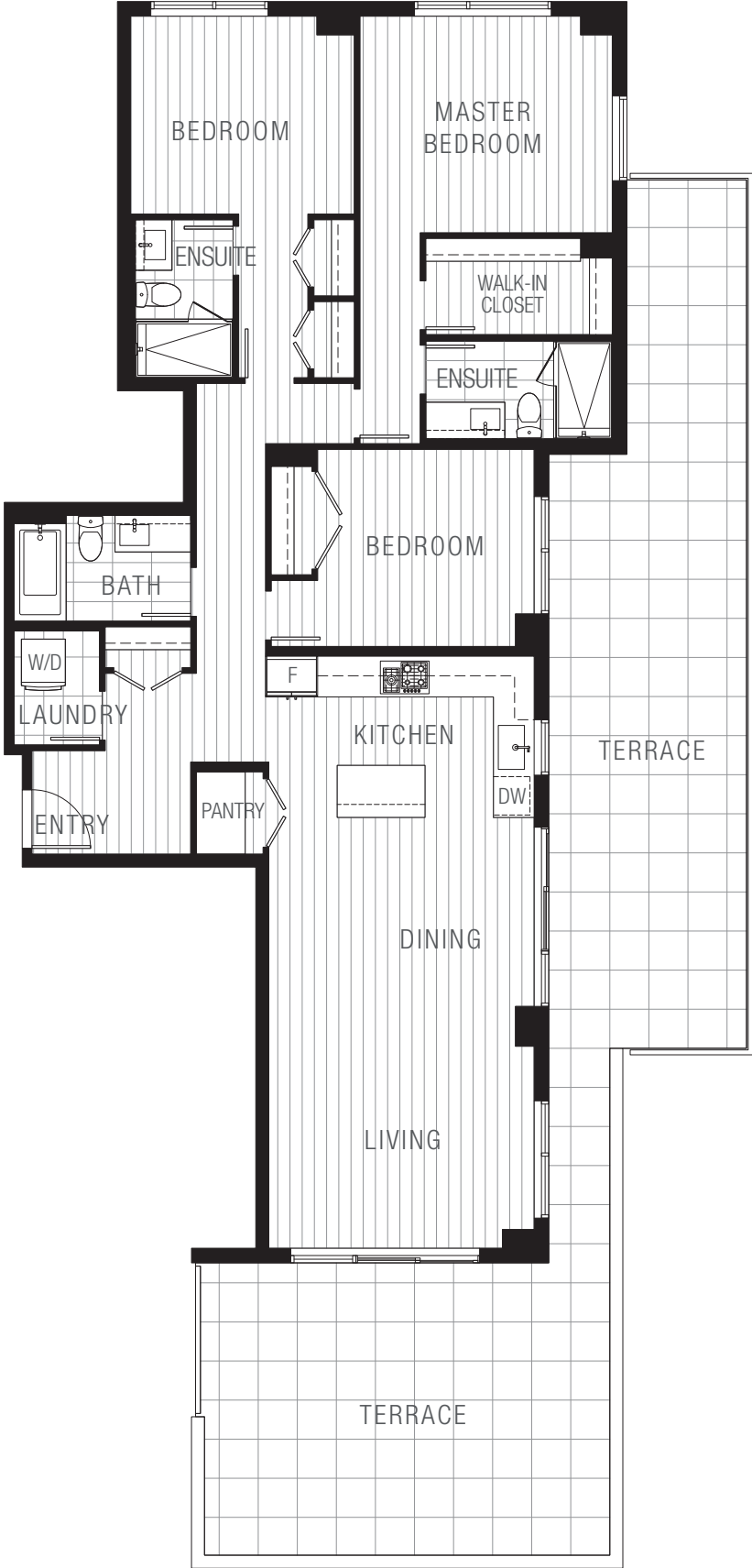
LEVEL 3



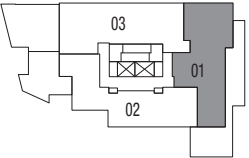
# PLAN 3B – PENTHOUSE

## 3 BED + 3 BATH

INTERIOR: 1,409 sq. ft.  
TERRACE: 705 sq. ft.



# ALASKA



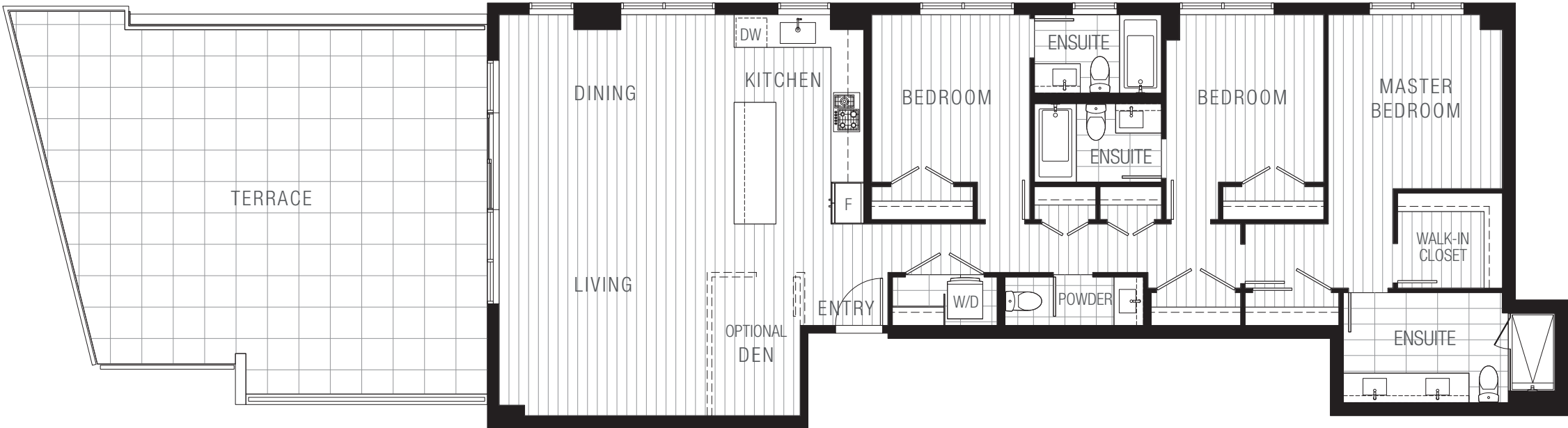


PLAN 3C – PENTHOUSE

3 BED + OPTIONAL DEN + 3.5 BATH

INTERIOR: 1,547 sq. ft.  
TERRACE: 648 sq. ft.

ALASKA





# PLAN 3D – PENTHOUSE

## 3 BED + 3 BATH

INTERIOR: 1,445 sq. ft.  
TERRACE: 466 sq. ft.





## SOCIAL SPACE

Hold social gatherings in style. The Social Lounge is a multi-use space perfect for getting together, be it birthday party, baby shower, or book club. Treat your guests with a meal from the fully equipped gourmet kitchen. Get comfortable on a leather couch during the day and work on your laptop, or meet a neighbour for coffee. This is a space for celebration and relaxation.

# ALASKA





## CATCH YOUR BREATH AND RECONNECT

Step outside into the lush and lovely Central Green and breathe deeply. Find a bench and sit with a mug of tea and a book. Chat with a neighbour in the Outdoor Lounge area. This is what it means to Live Well® and Play Well® at Alaska. Down-to-earth, naturally beautiful, exclusive to residents — this outdoor space is a secret garden at your doorstep.

# ALASKA



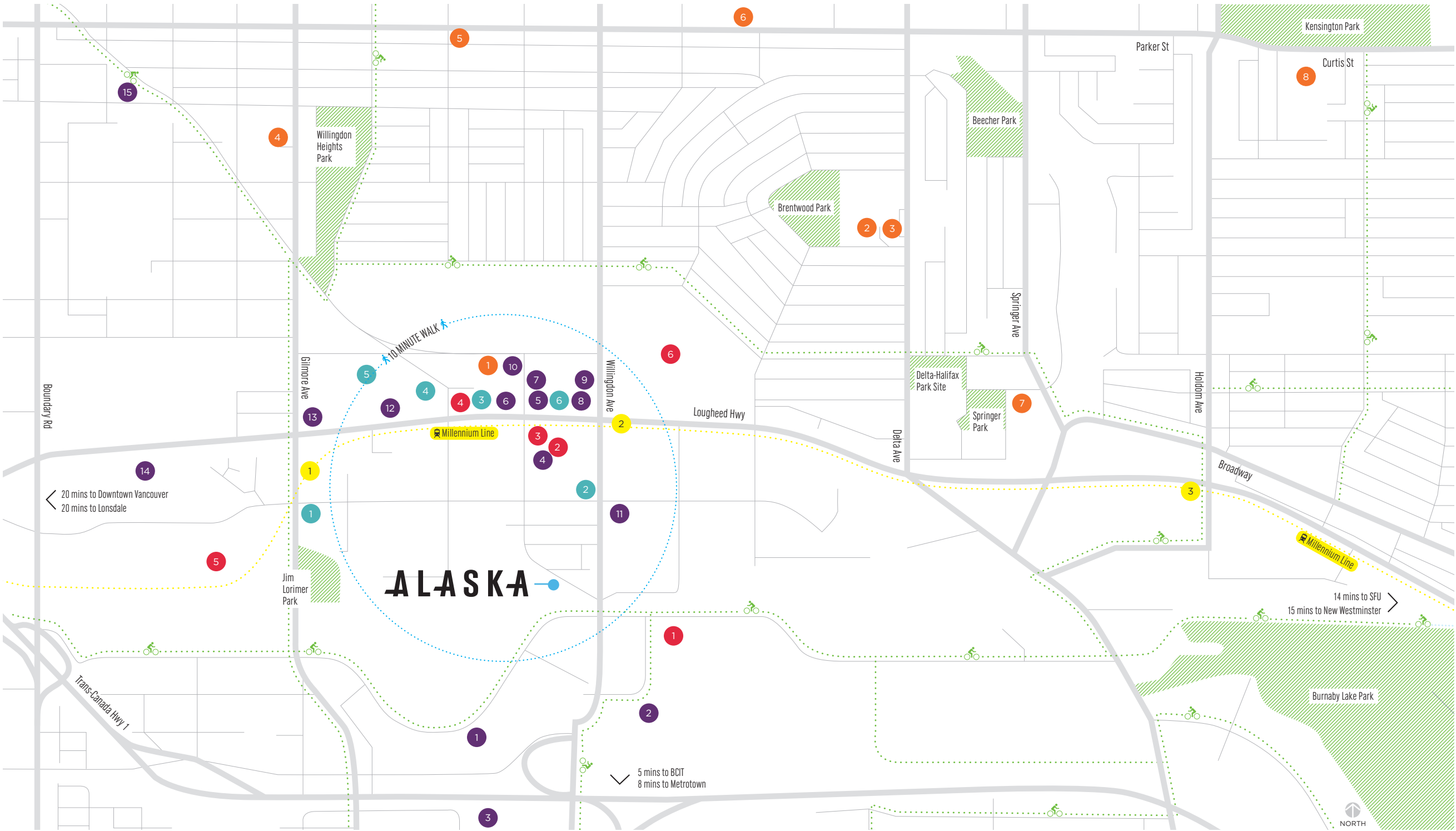
Artist's rendering of Alaska's Outdoor Lounge within the Central Green



# BRENTWOOD: YOUNG, HIP, EVOLVING

Life here feels effortless. Pop out for fresh local groceries, enjoy an expertly crafted cortado, pick up a bouquet, just because. A farmers' market, restaurants, gyms, parks, the Brentwood Town Centre SkyTrain Station, and much more — it's all within a 10-minute walk from home.

# ALASKA



## GROCERY & SHOPPING

- 1 Costco Wholesale
- 2 BC Liquor Store
- 3 Whole Foods Market
- 4 Save-On-Foods
- 5 Home Depot
- 6 Brentwood Town Centre

## EDUCATION & CHILD CARE

- 1 Madison Children's Centre
- 2 Brentwood Park Elementary
- 3 Brentwood Preschool
- 4 Kitchener Elementary
- 5 Puddle Jumpers Daycare
- 6 École Alpha Secondary
- 7 Brentwood Montessori Child Care
- 8 École Aubrey Elementary

## RESTAURANTS & CAFÉS

- 1 Crème de la Crumb Bakeshop
- 2 The Keg Steakhouse + Bar
- 3 Grand Dynasty Seafood Restaurant at Grand Villa Casino
- 4 Starbucks
- 5 Browns Socialhouse
- 6 JOEY Burnaby
- 7 The Viet Noodle Guy
- 8 Sooda Korean BBQ
- 9 Pacific Poke
- 10 Sushi Yoi
- 11 Pasta Amore Pizzeria Ristorante
- 12 Cactus Club Cafe
- 13 White Spot
- 14 Earls Kitchen + Bar
- 15 Steamworks Brewery & Taproom

## HEALTH & WELLNESS

- 1 Oxygen Yoga & Fitness
- 2 F45 Training Burnaby West
- 3 Spin + Yin Cycle and Mindfulness Studio
- 4 Tantra Fitness
- 5 Club16 Trevor Linden Fitness
- 6 Spring Medical Centre

## TRANSIT

- 1 Gilmore Station
- 2 Brentwood Town Centre Station
- 3 Holdom Station



# BRENTWOOD: CONNECTIVE, URBAN, AND VIBRANT



Get anywhere you want to go, and fast. At Alaska, you'll have access to myriad transport options to take you across the city. For example, just a short walk away, you'll find Brentwood SkyTrain Station and bus loop — your gateway to downtown and rapid transit across Metro Vancouver. Plus, it's quick and easy to connect to major commuter routes by car.

# ALASKA





LIVE WITH HEART  
IN BRENTWOOD

ALASKA



Quality of life is woven into every day at Alaska. It's just steps from all the convenient shops and services of the Brentwood hub. Yet Alaska feels like a private enclave. It's quiet and tucked away from the hustle and bustle.



AMACON'S NEXT CHAPTER  
IN BURNABY

ALASKA



Juneau Tower, Brentwood in Burnaby



Imperial, Metrotown in Burnaby



Imperial, Metrotown in Burnaby



Juneau Townhomes, Brentwood in Burnaby



The Dawson, Brentwood in Burnaby



Amacon has helped hundreds of homebuyers find a beautiful new home in Burnaby's Brentwood and Metrotown neighbourhoods, and the Amacon team has grown deep roots there in the process.

As the community has blossomed over the years, Amacon has contributed thoughtfully considered, lifestyle-focused projects that have helped make Brentwood an extraordinary place to live.





# ALASKA

LIVE WELL®  
WORK WELL®  
PLAY WELL®

Today, our residential portfolio gives homeowners opportunities to Live Well® from coast to coast.

Each and every development has contributed to our highly regarded reputation for providing exceptional long-term value. Our award-winning company's dedication to service and customer care stands behind everything we build. All new Amacon homes are backed by comprehensive third-party coverage.

We think you'll feel quite at home at Alaska.